



HOLZ IN FORM

UNIQUE WOOD PRODUCTS
TEXTURED PANELS



CATALOGUE
2023



VD-Werkstätten

Deeply textured wood surfaces

VD-Werkstätten specializes in the production of high quality and unique wood products, which can be used for all kinds of interior application.

Founded over 50 years ago as a supplier to the local furniture industry, we have grown through continuous investments and innovations to become a leading manufacturer of deeply textured wood panels internationally.

All products are made in Germany in our factory based in Bad Salzflen, situated in the heart of the German furniture industry.

Industry, trade and architects

Our customers include renowned manufacturers of the furniture industry, our global trading partners for our Holz in Form products, as well as architects and interior designers.

Constant product development

Our own research and development department, state of the art tool shop, and a cutting-edge production facility are the guarantee for the high quality and uniqueness of our products.

A constant communication and interaction with designers, architects, and industry partners enables us to react immediately to new trends and incorporate those quickly into our product portfolio.

High manufacturing depth

Whether a standard panel, semi-finished parts, or individually packed furniture elements – 130 employees assure a high quality production which satisfies every customer's wish.



Holz in Form

A product of VD-Werkstätten

Holz in Form represents our product range of embossed textured wood panels, which are produced in a unique and elaborated manufacturing process.



A combination of high pressure and heat enables us to create structures with a very resistant surface in different finish options from lacquer to real wood veneer.

Inspired by the nature

Holz in Form panels are inspired by the distinctive structures of natural and man-made textures, combining natural materials with an innovative manufacturing technology.

We are constantly striving to create new surfaces and to open up new ways of application in interior design.

Advantages

- High form stability
- Resistant surface
- Reliable supply
- Diverse design possibilities

Be inspired by a unique collection that sets the standards and is known far beyond the borders of Europe.





2602 Flamed Wood
Page 5



2588 Burned Wood
Page 9



2578 Rough Old Wood
Page 13



2512 Old Nature
Page 15



2491 Antikwood
Page 19



2652 Rustic Wood
Page 20



2487 Borke
Page 21



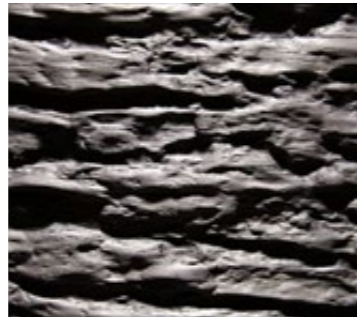
2590 Chopped Wood
Page 23



2584 Smooth Bark
Page 27



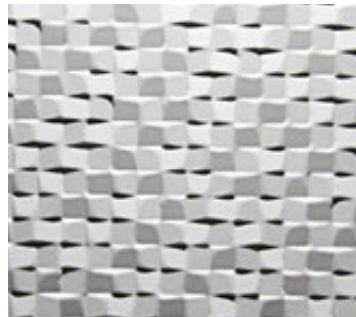
2468 Spalt
Page 29



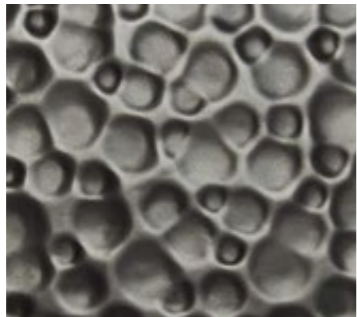
2596 Rinde
Page 33



2511 Blockwood
Page 35



2553 Paillette
Page 37



2450 Pluto
Page 41



2561 Small Diamond
Page 45



2536 Diamond
Page 47



2551 Big Diamond
Page 51



2508 Rocks
Page 55



2252 Schilf
Page 57



2201 Wave
Page 59



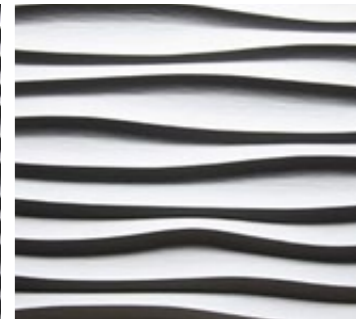
2261 Sisal
Page 61



2395 Python
Page 65



2306 Dune
Page 66



2344 Ocean
Page 67



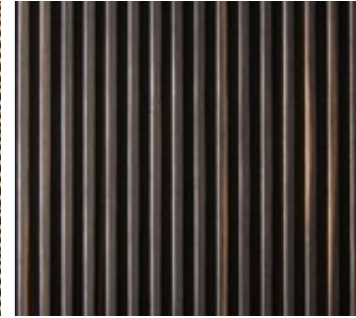
2369 Flame
Page 71



2451 Split
Page 73



2432 Groove
Page 75



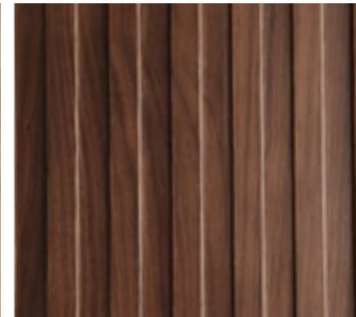
2610 Light
Page 76



2608 Match
Page 77



2651 Stripes
Page 79



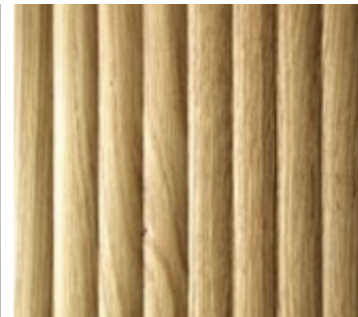
2643 Straight
Page 80



2567 Deep Groove II
Page 81



2552 Trapez
Page 83



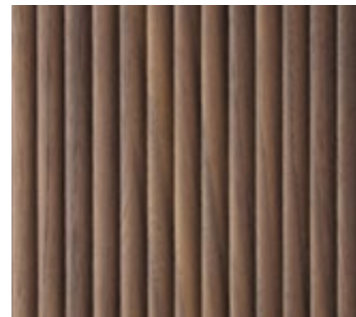
2669 Rod
Page 85



2636 Cave
Page 86



2667 Ribbed
Page 87



2668 Reed
Page 88



Old Nature Tabletop
Page 89



Burned Wood Tabletop
Page 91



Chopped Wood Tabletop
Page 93



2602 Flamed Wood



Black

Flamed Wood represents charred wood without being actually burned. The burned optic is gained by the special embossing process of multiple veneer layers. Flamed wood is deeper than Burned wood.

Board size 2450 x 1050 / 3135 x 1270 mm

Coreboard Black MDF, Particle board

Thickness 9 mm / 20 mm

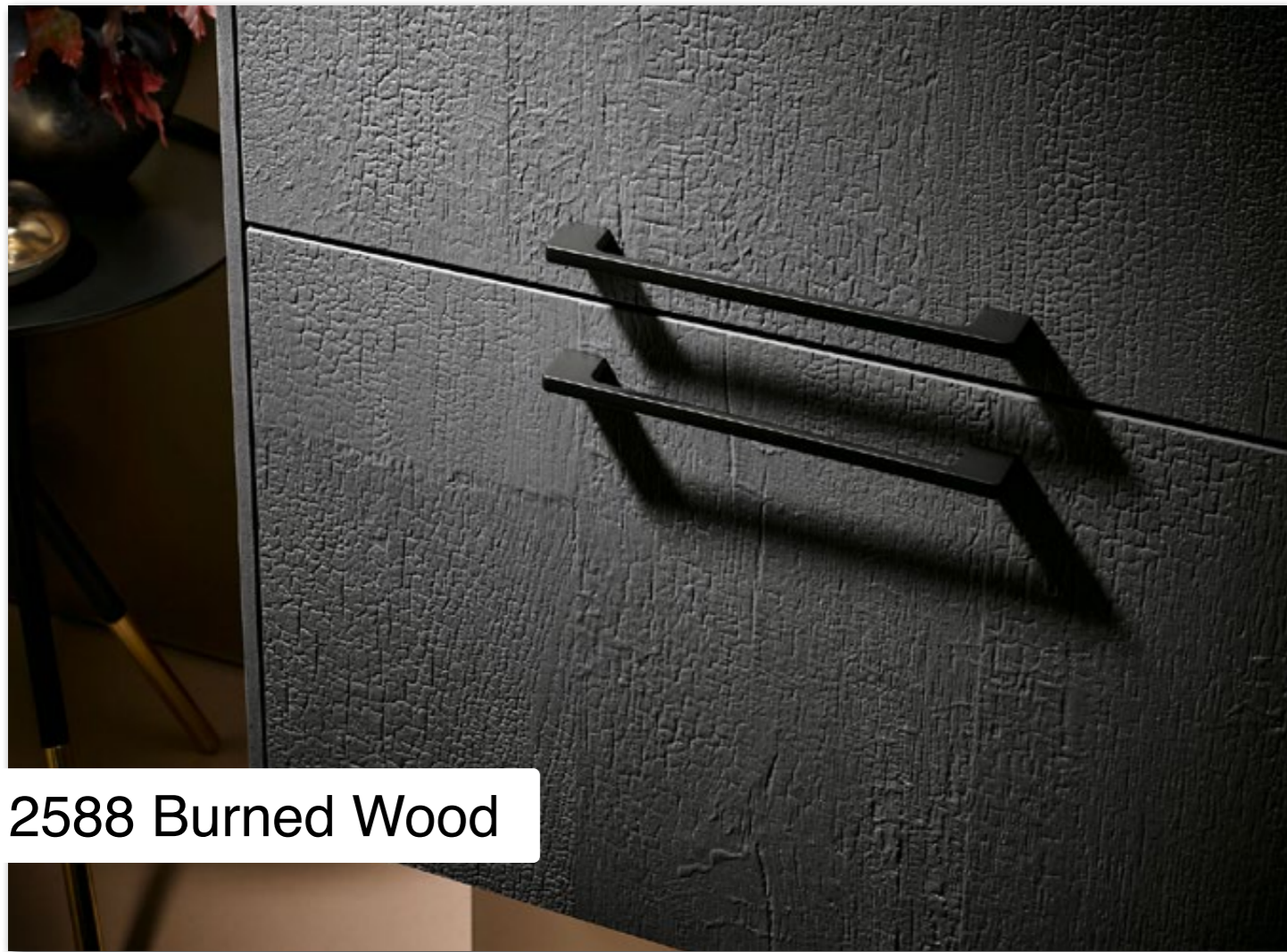
Repetition No repetition

Finish Clear matt lacquered

Embossment One-sided







Black



Ash effect lacquered

Burned Wood represents charred wood without being actually burned. The burned optic is gained by the special embossing process of multiple veneer layers.

Board size 3135 x 1270 mm

Thickness 19,5 mm

Finish Raw, unlacquered

Coreboard Plywood

Repetition No repetition

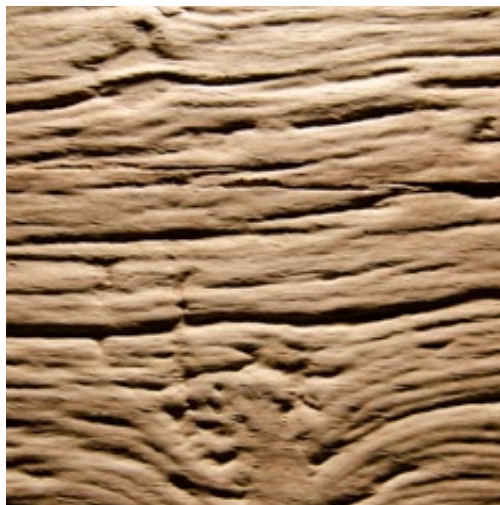
Embossment One-sided







2578 Rough Old Wood



Oak rustic



Oak smoked



Larch smoked

Rough Old Wood represents the surface of washed out wood. The deep surface has a rather smooth than raw touch.

Board size 3135 x 1270 mm

Thickness 18,5 mm

Finish Raw, unlacquered

Coreboard Plywood

Repetition No repetition

Embossment One-sided





2512 Old Nature



Oak nature

Old Nature displays the rustic surface of old reclaimed wooden beams. The authentic wood surface is created by a combination of real wood veneers and a distinctive embossment.

Board size 2450 x 1050 / 1050 x 2450 mm
3135 x 1270 mm

Thickness 6,5 mm / 10 mm / 19,5 mm

Finish Clear matt lacquered

Coreboard Black MDF

Repetition No repetition

Embossment One-sided



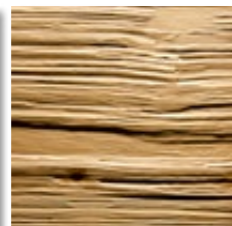




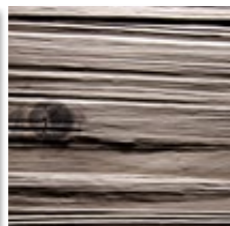
2491 Antikwood



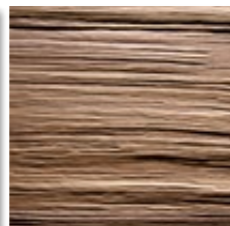
Rose Oak



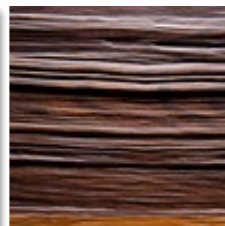
Spruce antique



Oak grey



Walnut antique



Larch smoked

Antikwood creates the look of old, rustic wood by combining real wood veneers with a surface that appears slightly brushed.

Board size 3135 x 1270 / 1270 x 3135 mm

Thickness 5 mm / 18,5 mm*

Finish Raw, unlacquered

Coreboard Multilayer veneer / Plywood*

Repetition No repetition

Embossment One-sided



2652 Rustic Wood



Knob oak



Old oak

Rustic Wood recalls the design of rough broken wood. Rustic wood has a high notable depth embossing.

Board size 2450 x 1050 mm

Thickness 18,5 mm

Finish Raw, unlacquered

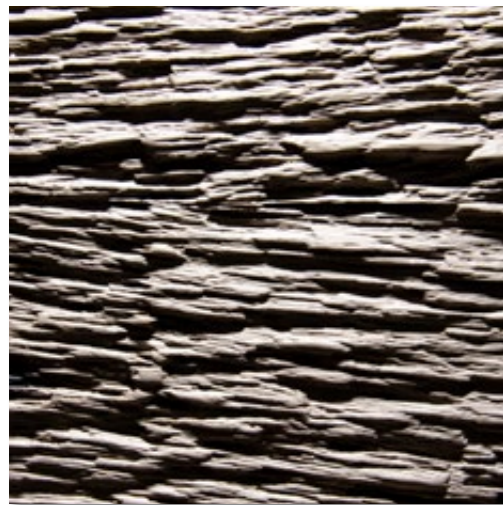
Coreboard Particle board

Repetition No repetition

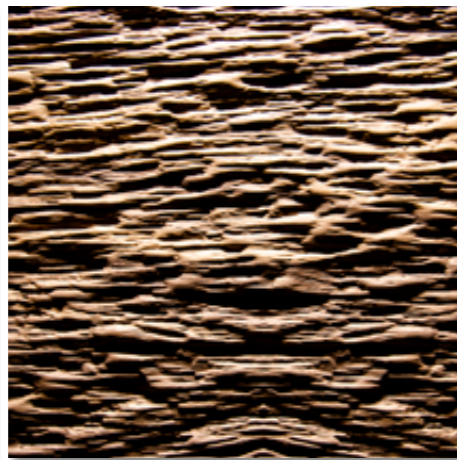
Embossment One-sided



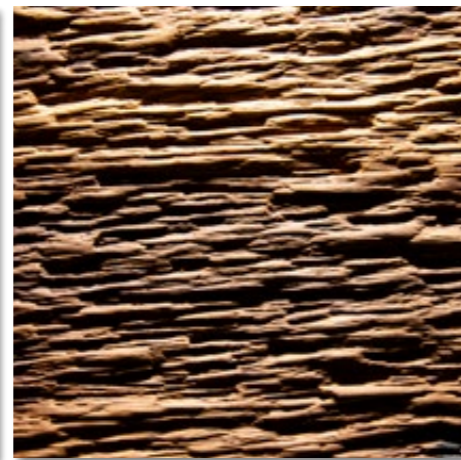
2487 Borke



Oak grey



Antique walnut



Larch smoked

Borke displays the outer layer of tree bark as authentic as possible. In the deepest sections, the veneer is intentionally cracked to intensify the depth effect.

Board size 2450 x 1050 mm

Thickness 21 mm

Finish Raw, unlacquered

Coreboard Plywood

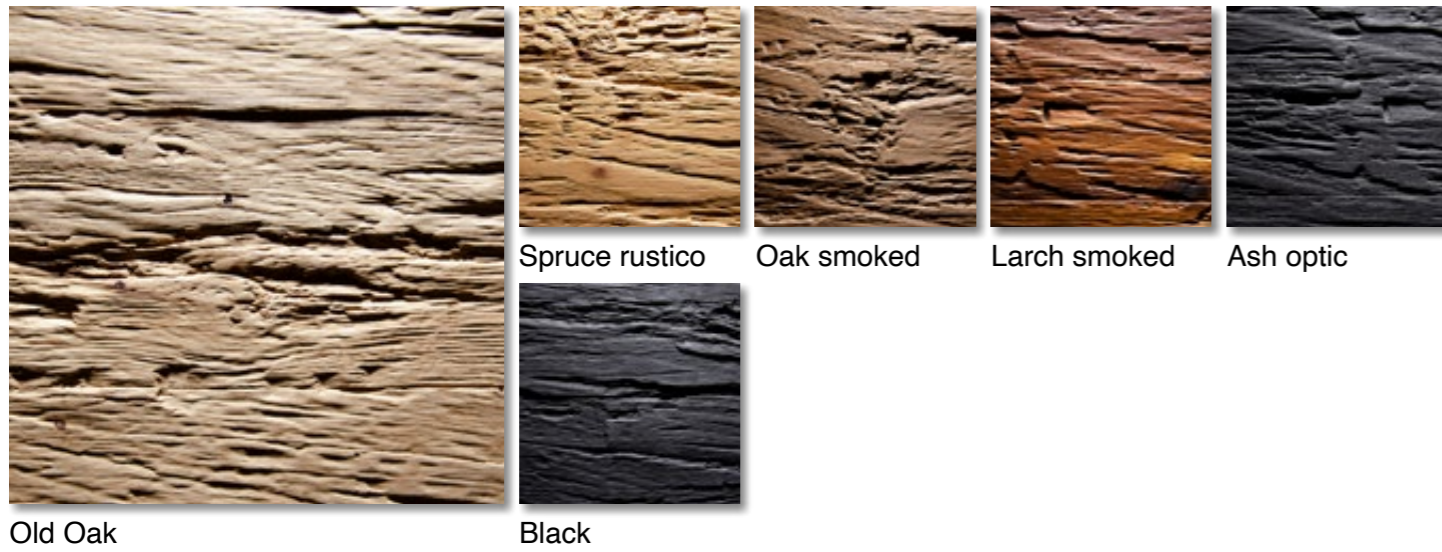
Repetition No repetition

Embossment One-sided





2590 Chopped Wood



Chopped Wood is embossed like old wood, which has traditionally been chopped by hand. Due to the strong embossment, the surface is closed and more resistant.

Board size 3135 x 1270 mm

Thickness 18,5 mm

Finish Raw, unlacquered

Coreboard Plywood

Repetition No repetition

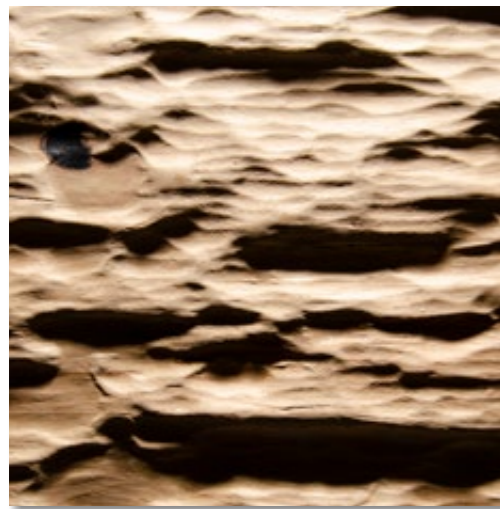
Embossment One-sided



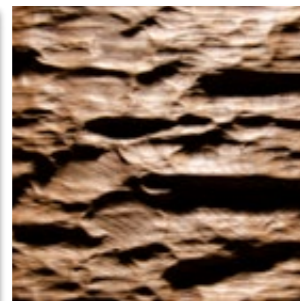




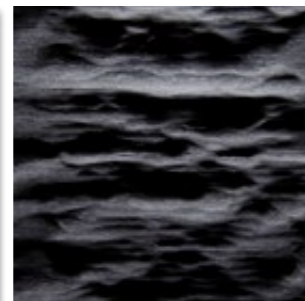
2584 Smooth Bark



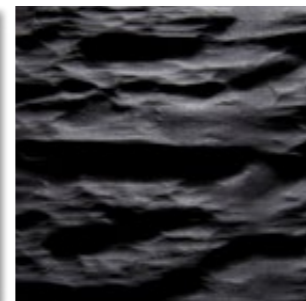
Oak rustic



Oak smoked



Black



Black matt lacquered

Smooth Bark displays the even and smooth bark of a tree. The depressions are up to 5,6 mm deep, which creates an interesting play of light and shadow.

Board size 2450 x 635 / 2450 x 1050 mm

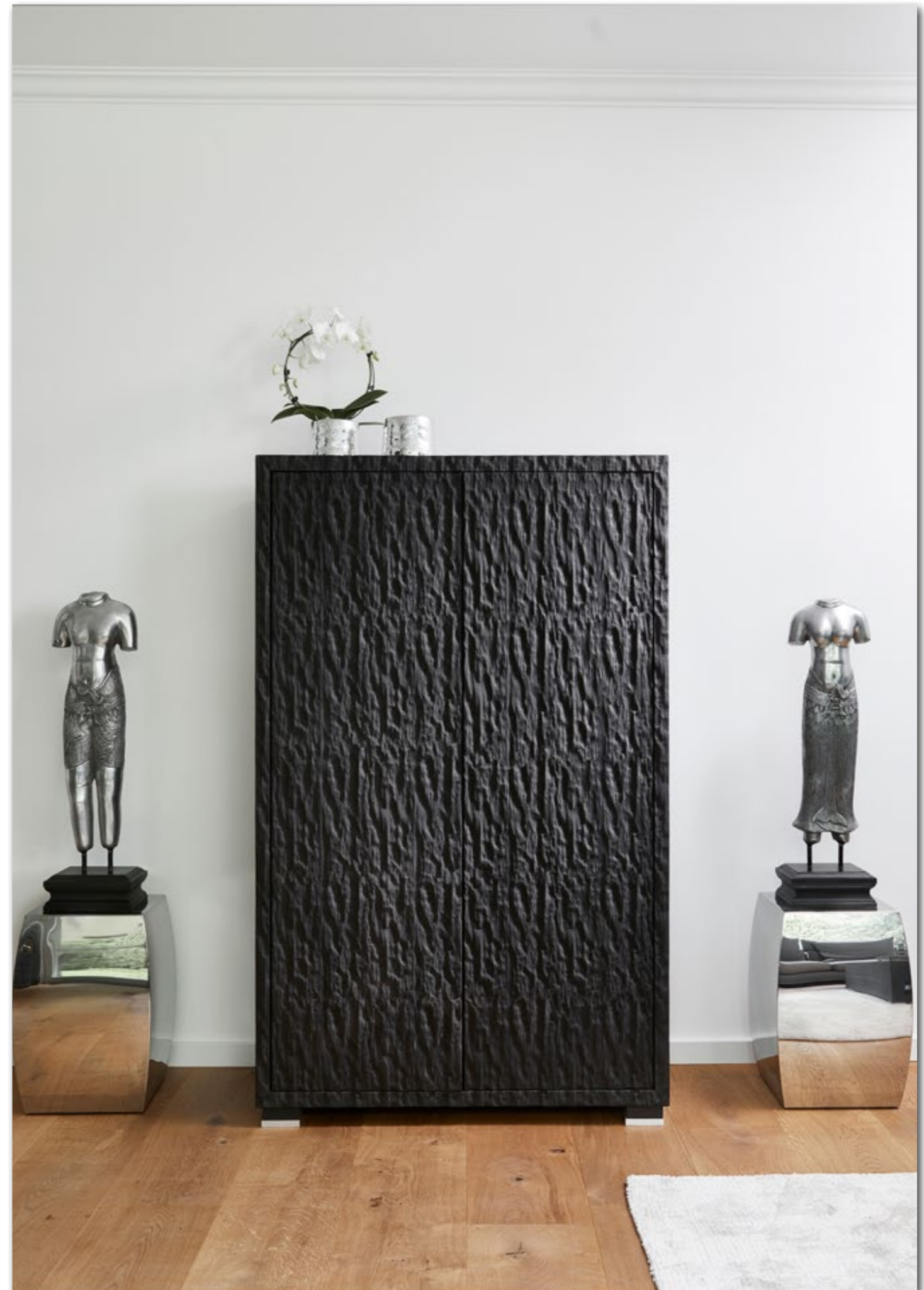
Thickness 21 mm

Finish Raw, unlacquered

Coreboard Plywood

Repetition No repetition

Embossment One-sided



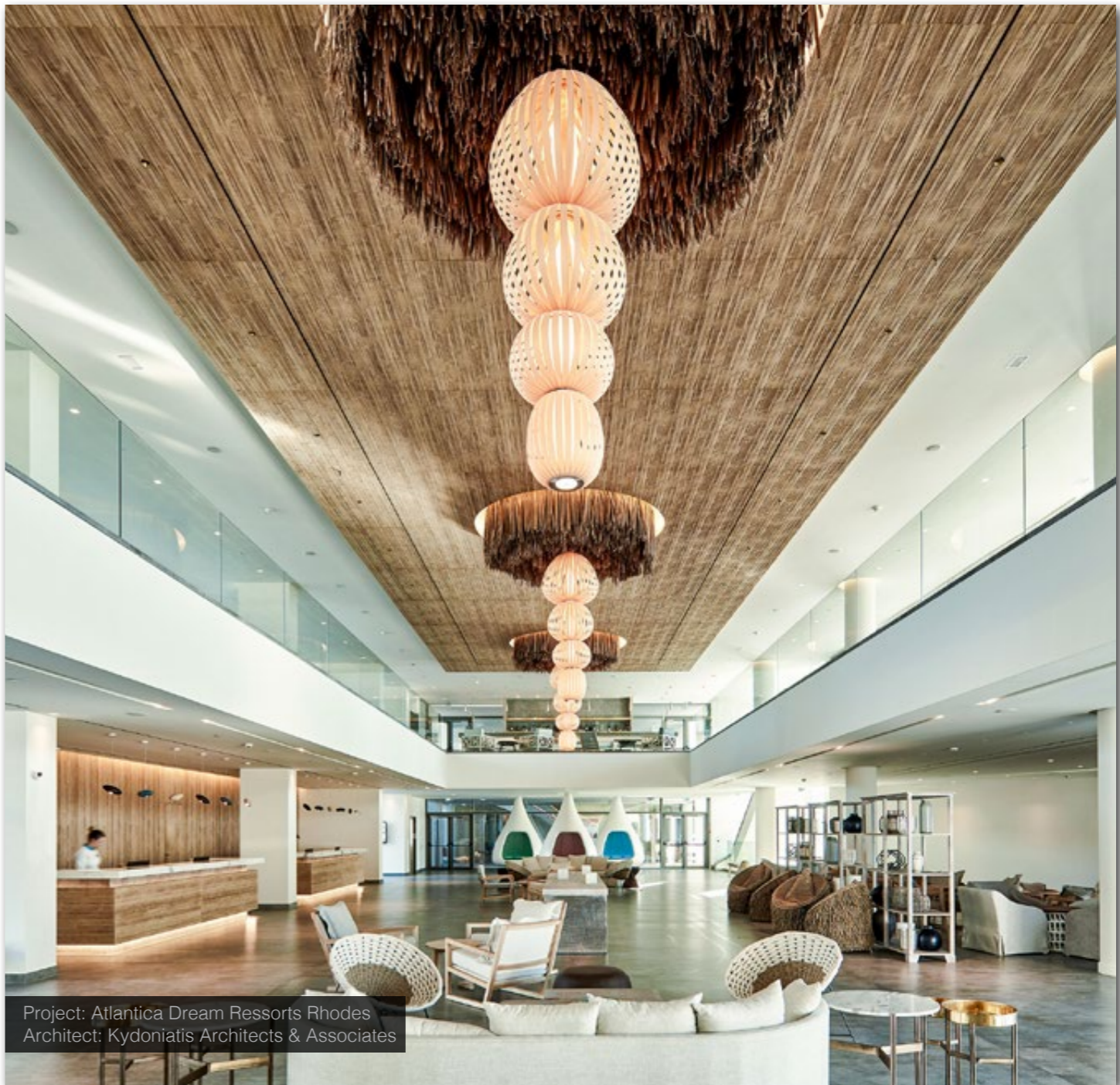


2468 Spalt



Spalt represents wood which has been split traditionally with an ax along the wood grain. Unlike real splitted wood, Spalt can be used as full sized panels.

Board size	2450 x 635 / 2450 x 1050 mm	Coreboard	Plywood
Thickness	21 mm	Repetition	No repetition
Finish	Raw, unlacquered	Embossment	One-sided



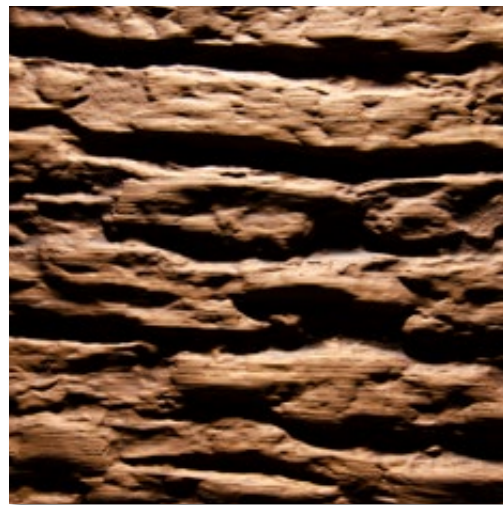
Project: Atlantica Dream Ressorst Rhodes
Architect: Kydoniatis Architects & Associates



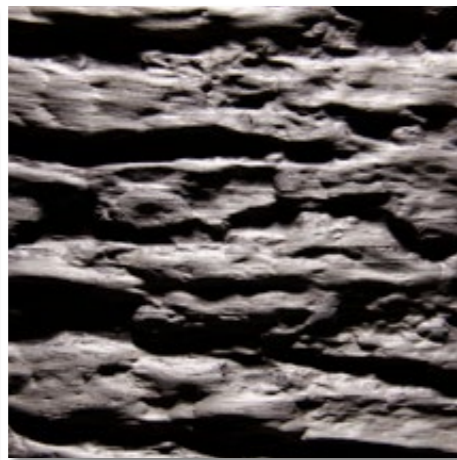




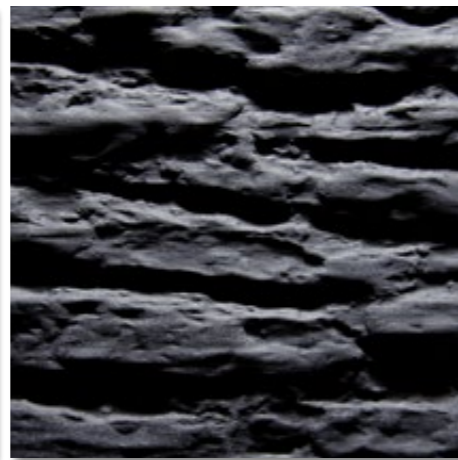
2596 Rinde



Oak smoked



Oak grey



Ash Optic lacquered

Rinde displays real oak bark as authentic as possible without cracking and crumbling. The surface is already lacquered and available as a full sheet.

Board size 2450 x 1050 mm

Thickness 22 mm

Thickness Clear matt lacquered

Coreboard Multi layer construction

Repetition No repetition

Embossment One-sided





2511 Blockwood



Blockwood recalls the surface of deep structured driftwood. With an embossment depth of up to 8,8 mm, Blockwood is the deepest structure within all authentic structures.

Board size	3135 x 1270 / 1270 x 3135 mm	Coreboard	Particle board / Plywood*
Thickness	21 mm	Repetition	No repetition
Finish	Raw, unlacquered	Embossment	One-sided





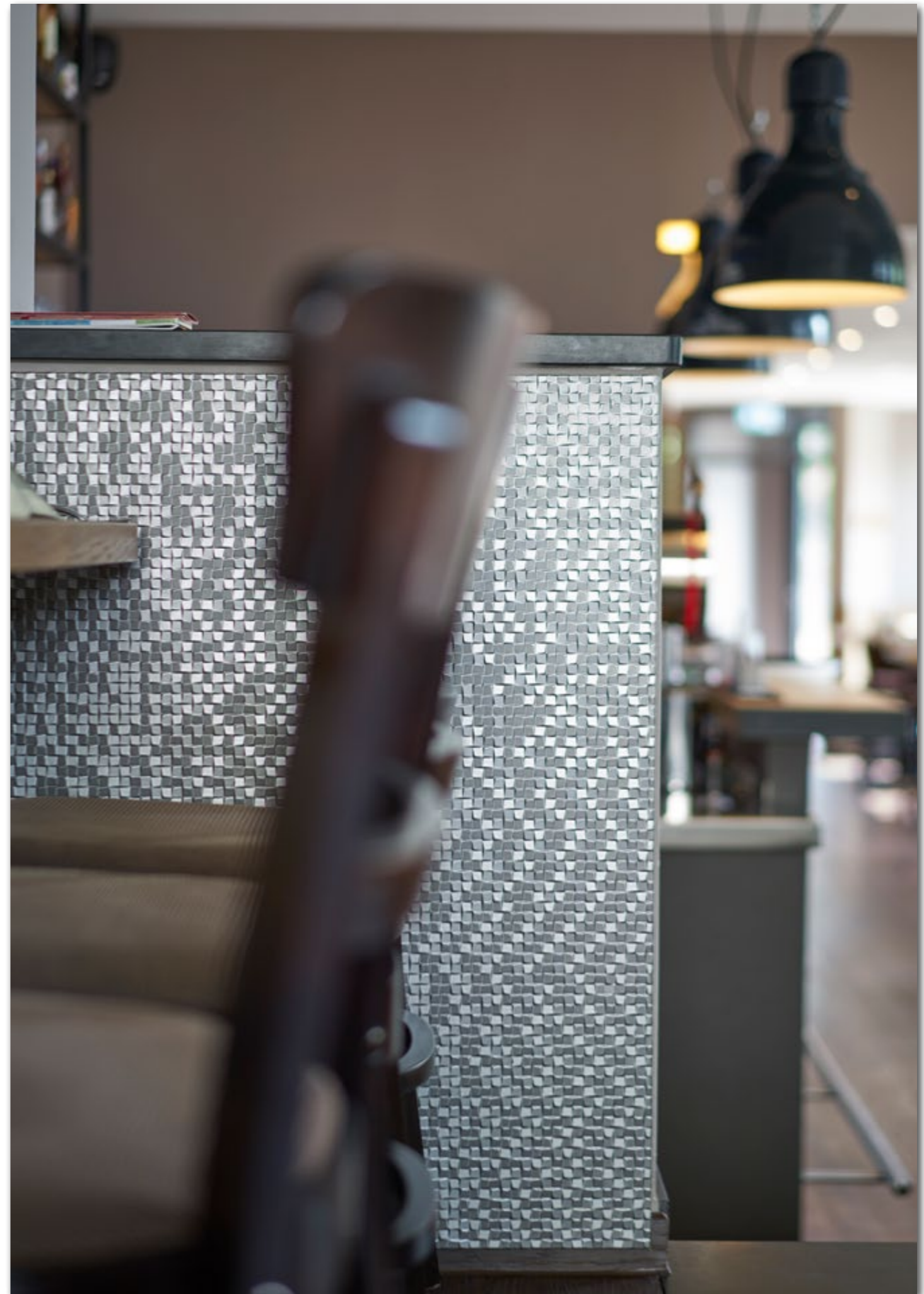
2553 Paillette



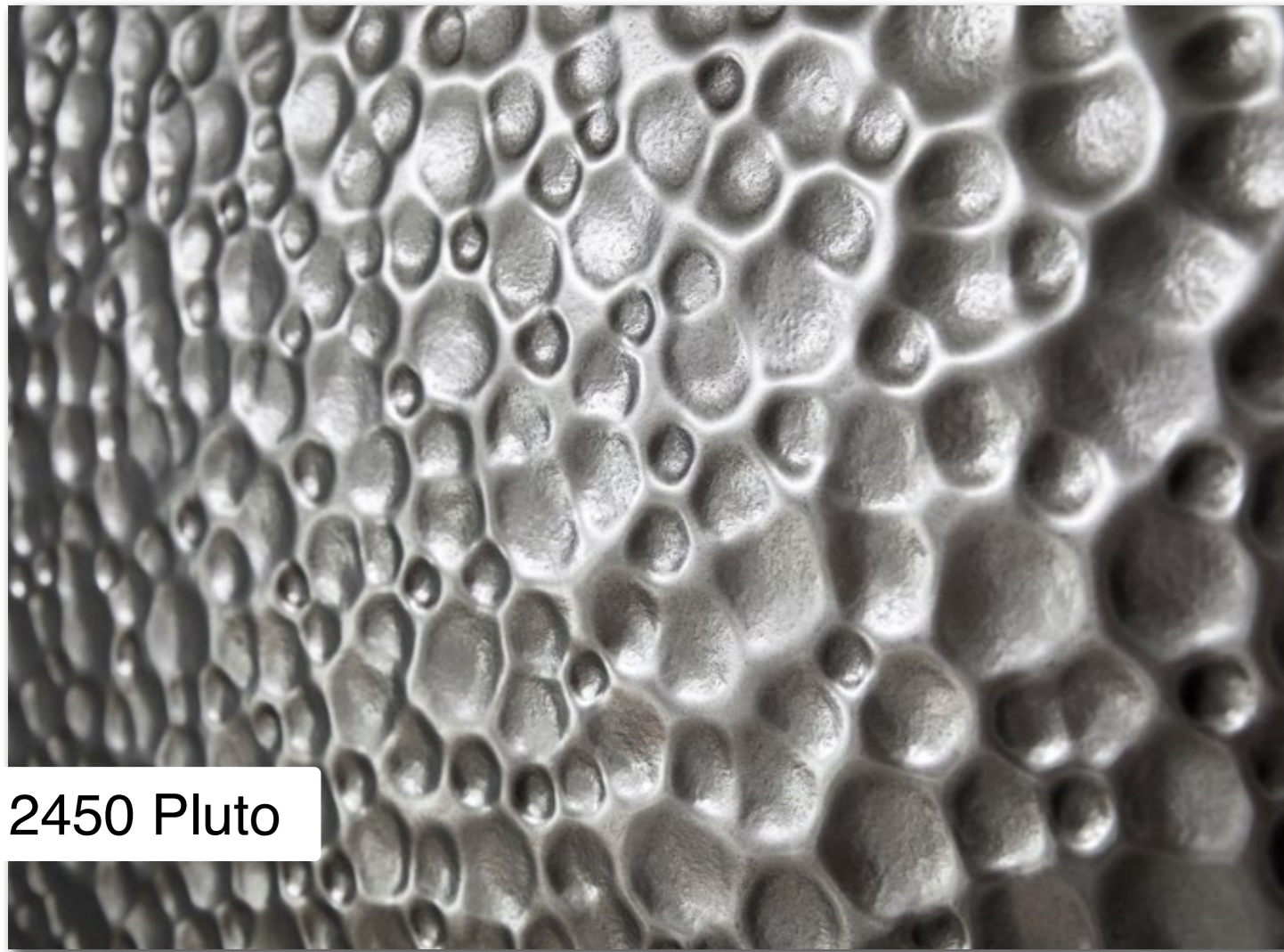
Lacquerable foil

Paillette looks like real jewellery-sequins with its special slender and flat surface. Each sequin has the size of approx. 10 x 10 mm and creates interesting effects of light and shadow.

Board size	2450 x 1050 / 3135 x 1270 mm	Coreboard	Particle board
Thickness	18,5 mm	Repetition	No repetition
Finish	Raw, unlacquered	Embossment	One-sided







2450 Pluto



Lacquerable foil

Pluto shows the characteristic crater surface of the correspondent planet. The randomly arranged craters create a very organic and authentic impression.

Board size 3135 x 1270 mm

Thickness 18,5 mm

Finish Raw, unlacquered

Coreboard Particle board

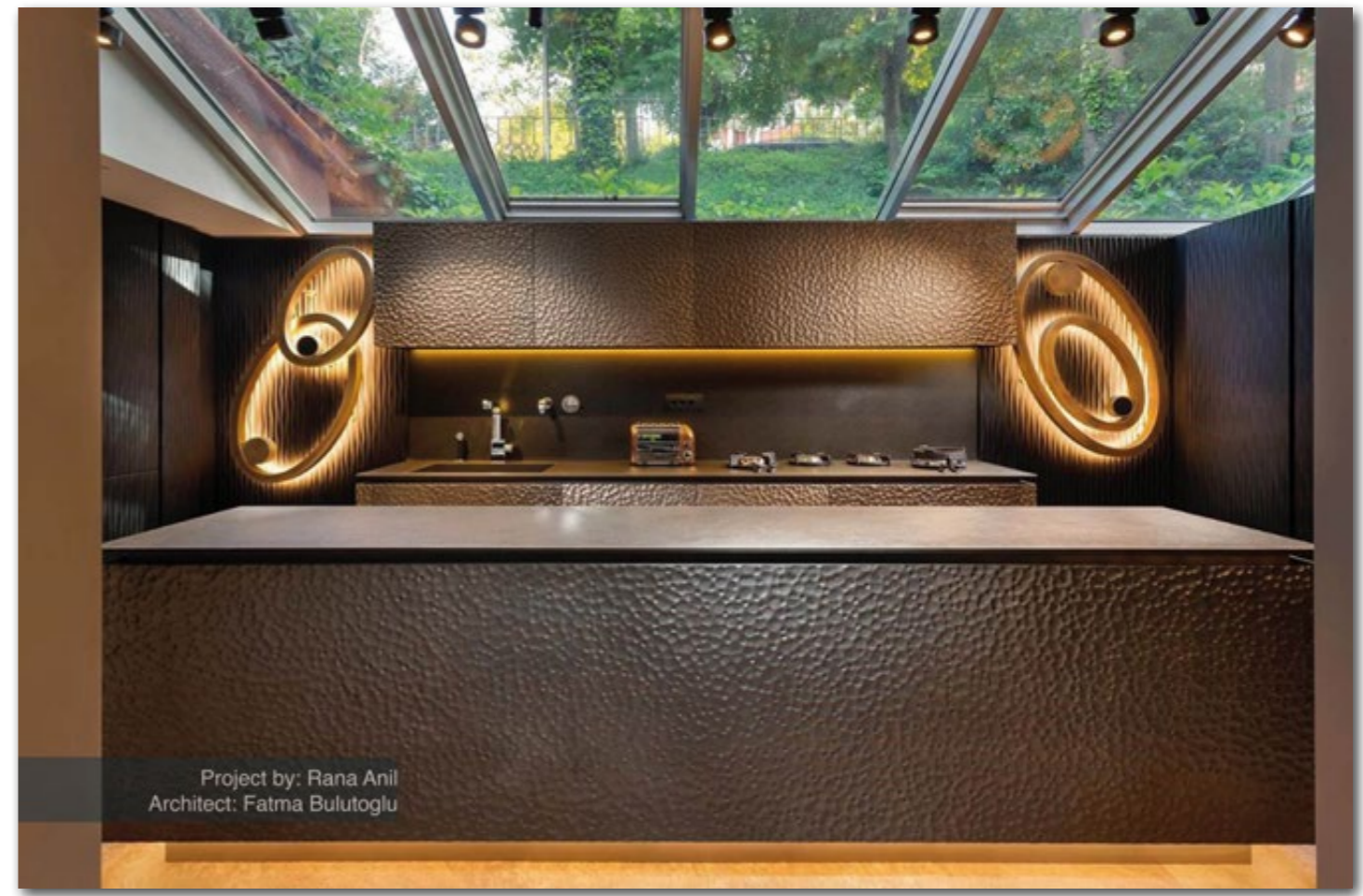
Repetition No repetition

Embossment One-sided

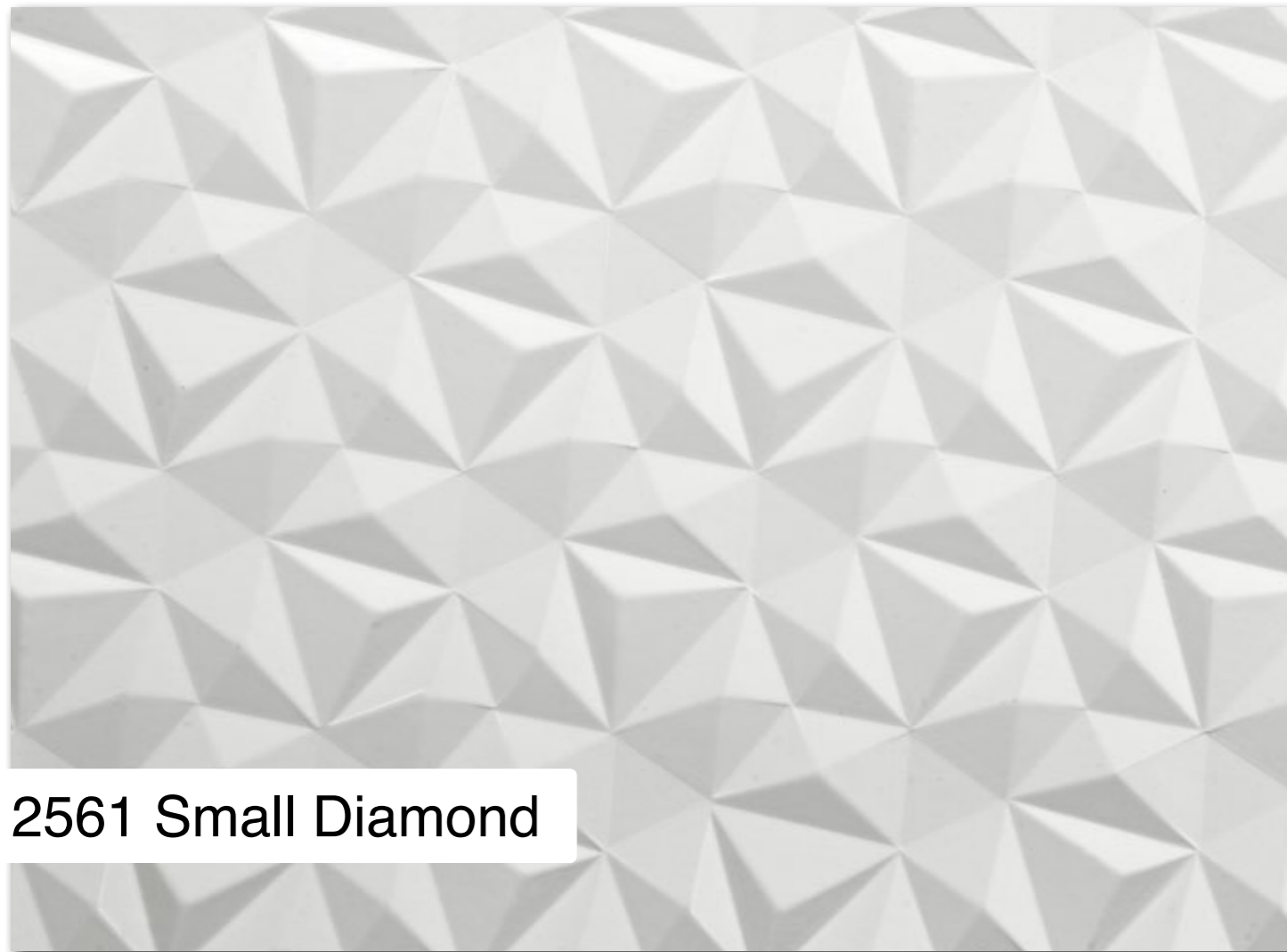




Project by: Rana Anil
Architect: Fatma Bulutoglu



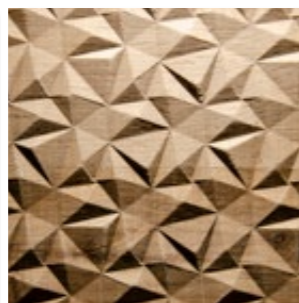
Project by: Rana Anil
Architect: Fatma Bulutoglu



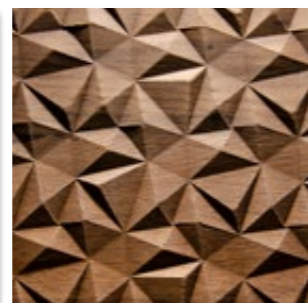
2561 Small Diamond



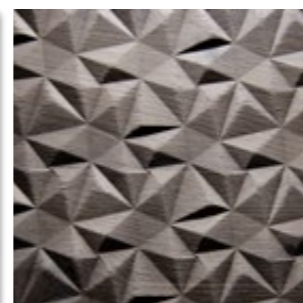
Lacquerable foil



Knob oak



Oak smoked



Oak grey



Small Diamond is inspired by the perfect facets of real diamonds. The combination of several triangles with different side lengths creates an interesting geometric structure.

Board size 2450 x 1050 mm

Thickness 18,5 mm

Finish raw, unlacquered

Coreboard Particle board

Repetition 2448,8 x 964,5 mm (111,31 x 96,45)

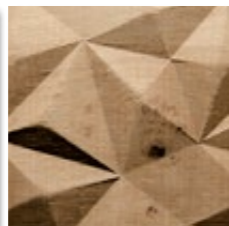
Embossment One-sided



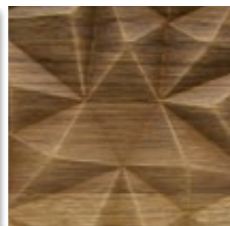
2536 Diamond



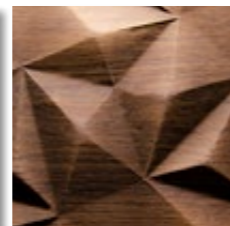
Lacquerable foil



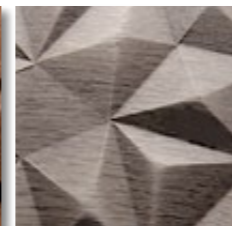
Knob oak



Old oak



Oak smoked



Oak grey

Diamond is inspired by the perfect facets of real diamonds. The combination of several triangles with different side lengths creates an interesting geometric structure.

Board size 3135 x 1270 mm

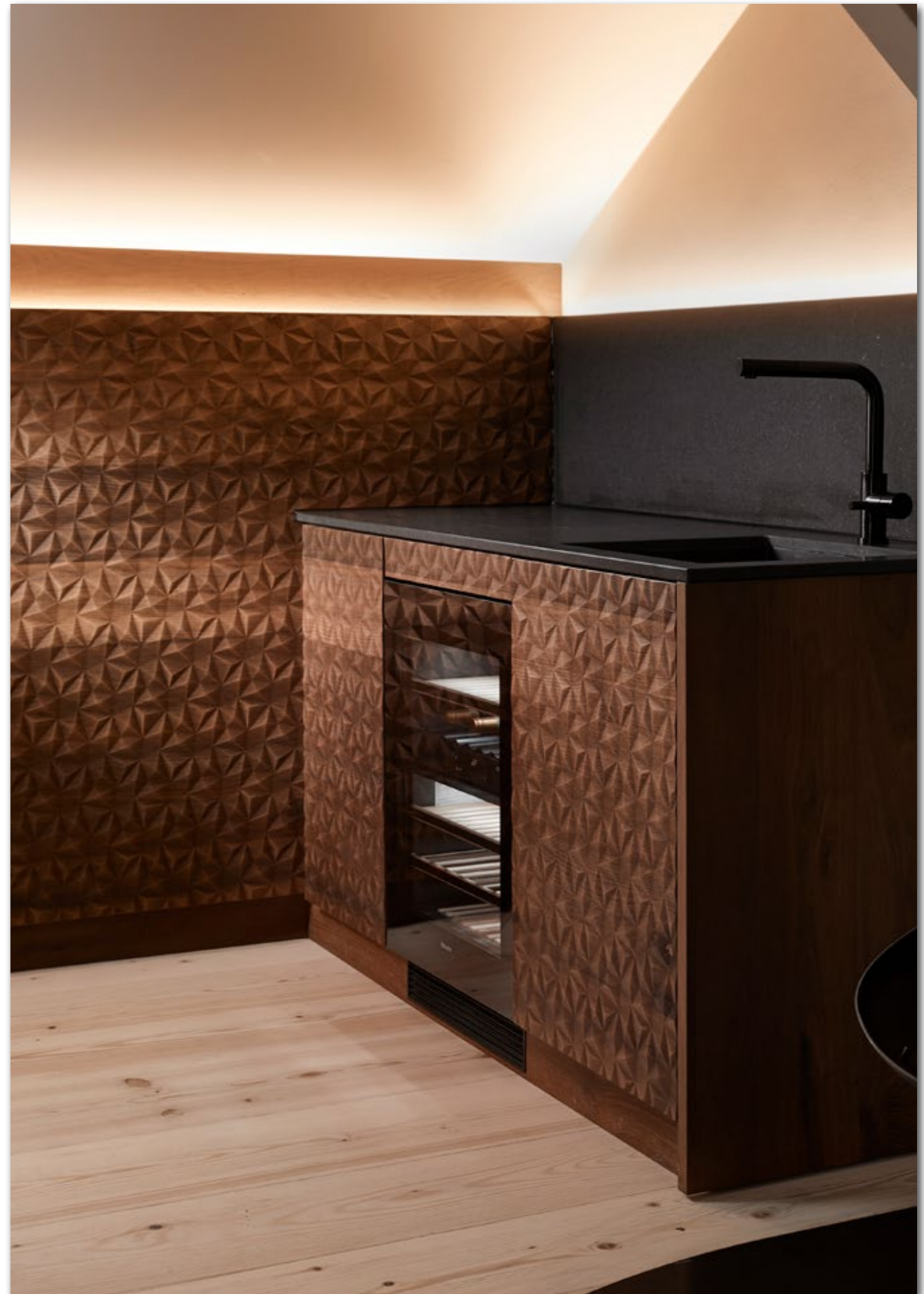
Thickness 18,5 mm

Finish Raw, unlacquered

Coreboard Particle board

Repetition 3122 x 1164 mm (223 x 194)

Embossment One-sided



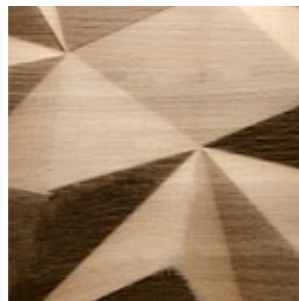




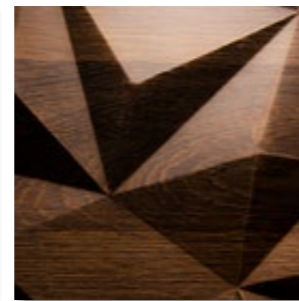
2551 Big Diamond



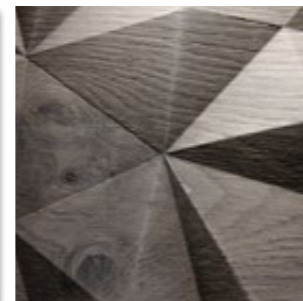
Lacquerable foil



Knob oak



Oak smoked



Oak grey



Big Diamond is inspired by the perfect facets of real diamonds. The combination of several triangles with different side lengths creates an interesting geometric structure.

Board size 2450 x 1050 mm

Thickness 34 mm

Finish Raw, unlacquered

Coreboard Plywood

Repetition 2490 x 862 mm (498 x 431)

Embossment One-sided





2508 Rocks



Lacquerable foil

Rocks is inspired by the texture of Hollow stones as normally found in the inside of caves.

Board size 1242 x 3100 mm

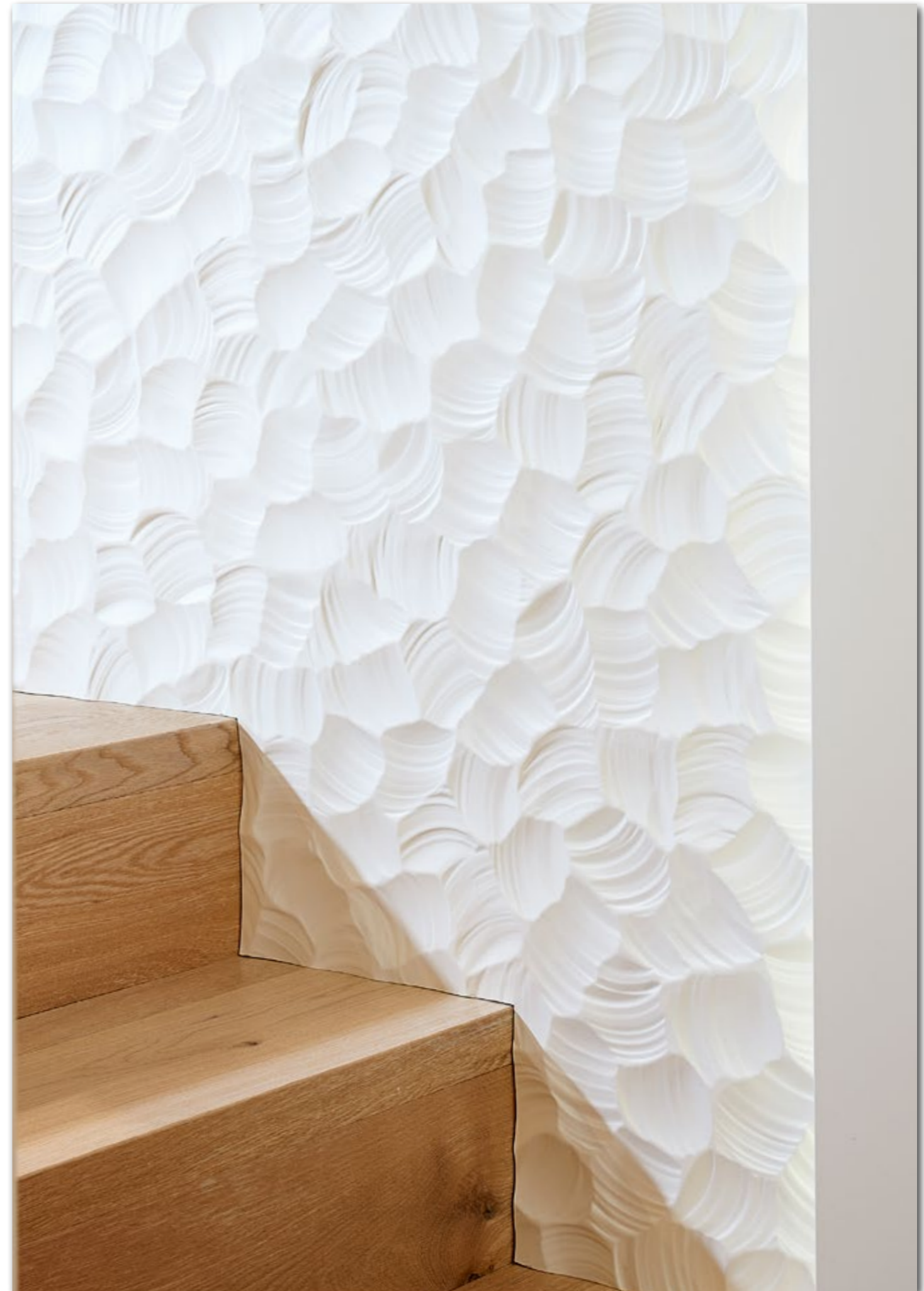
Thickness 21 mm

Finish Raw, unlacquered

Coreboard Particle board

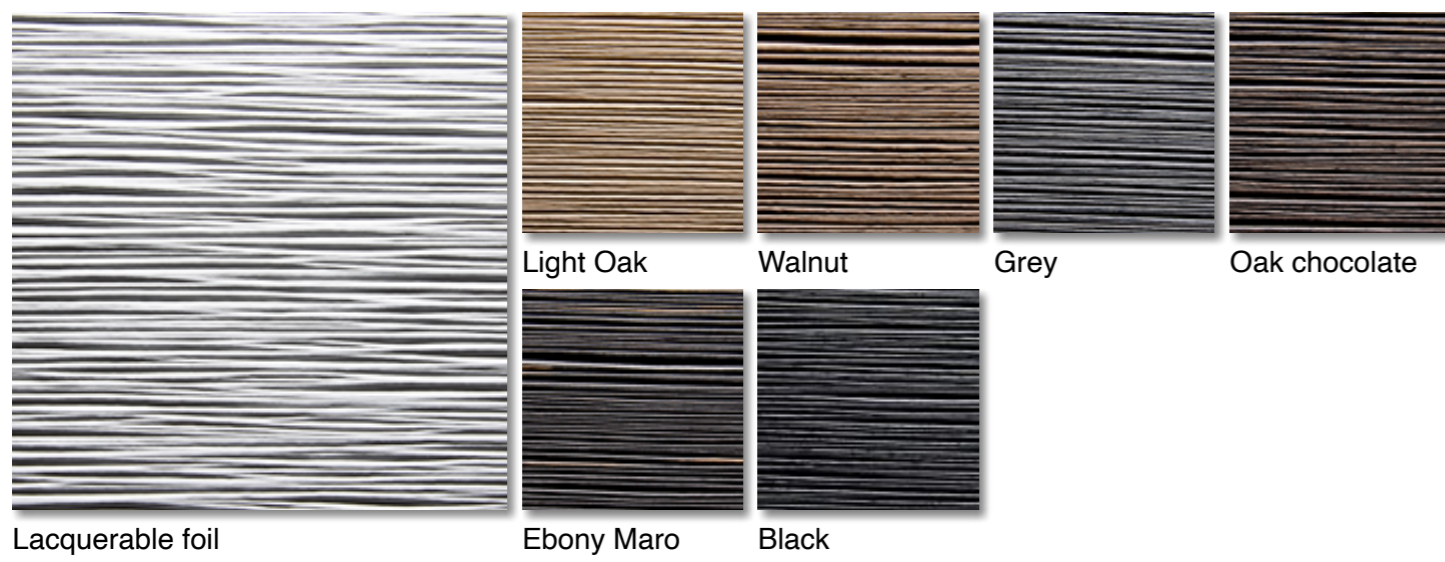
Repetition 1242 x 3100 mm

Embossment One-sided





2252 Schilf



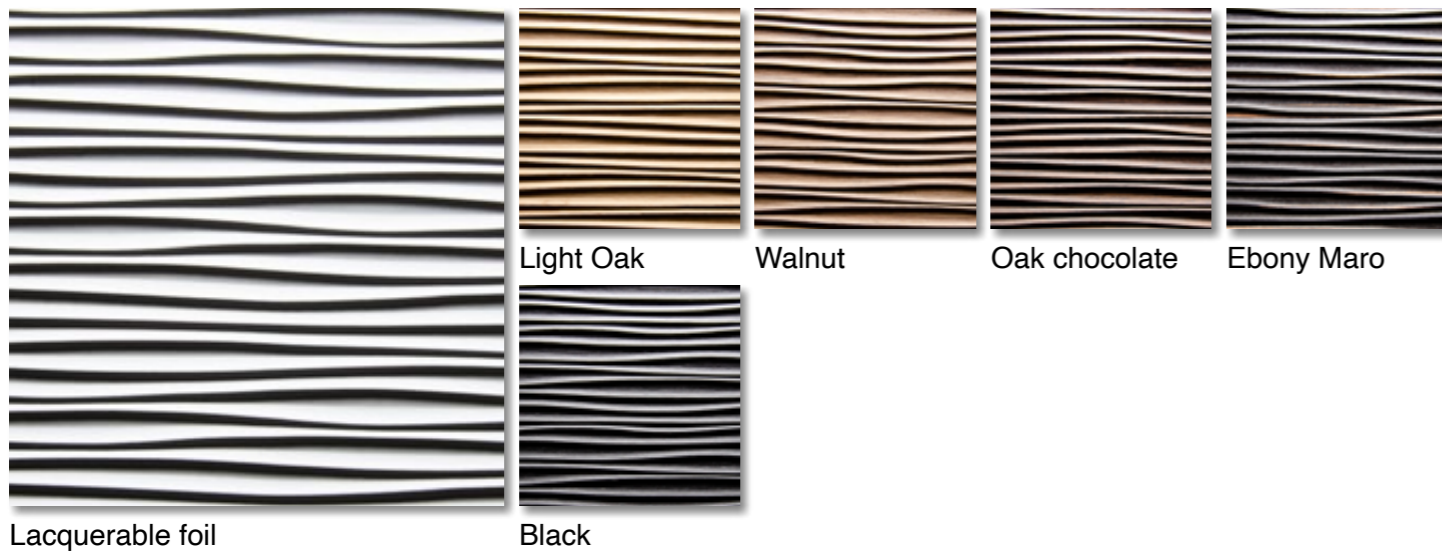
Schilf reminds of the structure of thin reeds. The fine and shallow surface is straight-lined, elegant and has despite of its fineness a very accurate profile.

Board size	2450 x 1050 / 1050 x 2450 mm 3135 x 1270 / 1270 x 3135 mm	Coreboard	MDF
Thickness	4,5 mm / 18,5 mm	Repetition	No repetition
Finish	Raw, unlacquered	Embossment	One-sided





2201 Wave



Wave recalls the natural wave movement of water. The slightly swung structure in combination with specially coloured veneers creates an elegant and modern appearance.

Board size 2450 x 1050 / 1050 x 2450 mm
3135 x 1270 / 1270 x 3135 mm

Thickness 4,5 mm / 18,5 mm

Finish Raw, unlacquered

Coreboard MDF

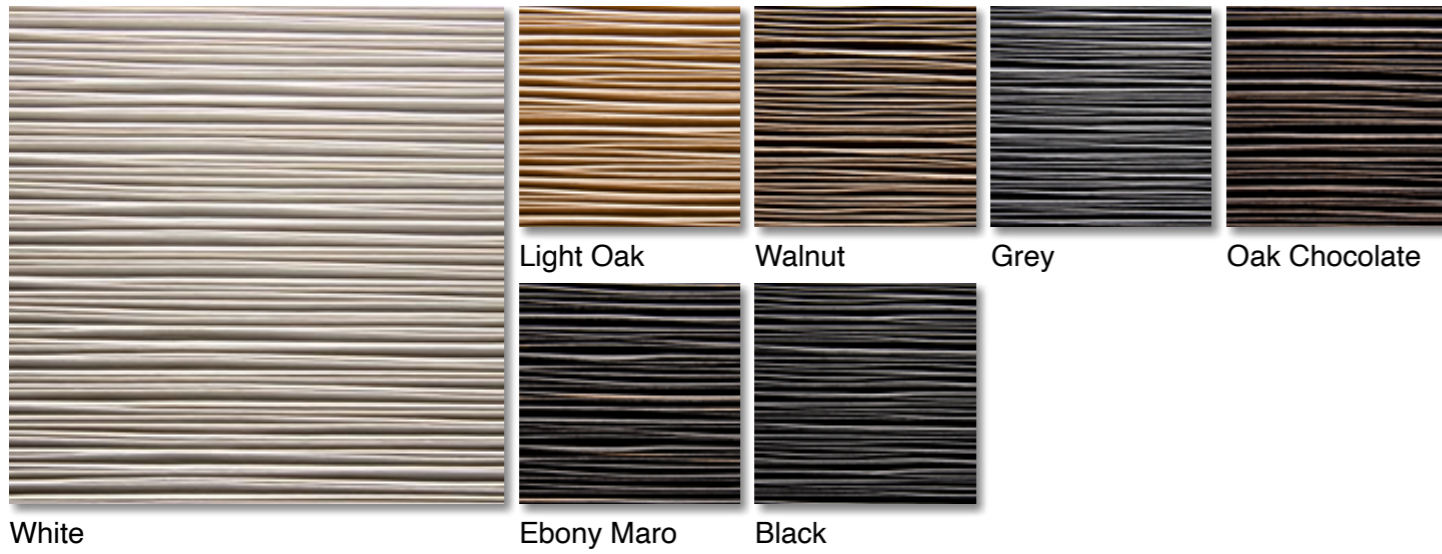
Repetition 3125 x 1250 mm (625 x 625)
1250 x 3125 mm (625 x 625)

Embossment One-sided





2261 Sisal



Sisal represents the leaves of the Sisal-Agave. The fine surface which flows slightly wavy appears very fine and elegant with a structure of up to 1,3 mm deepness.

Board size 2450 x 1050 / 1050 x 2450 mm
3135 x 1270 / 1270 x 3135 mm

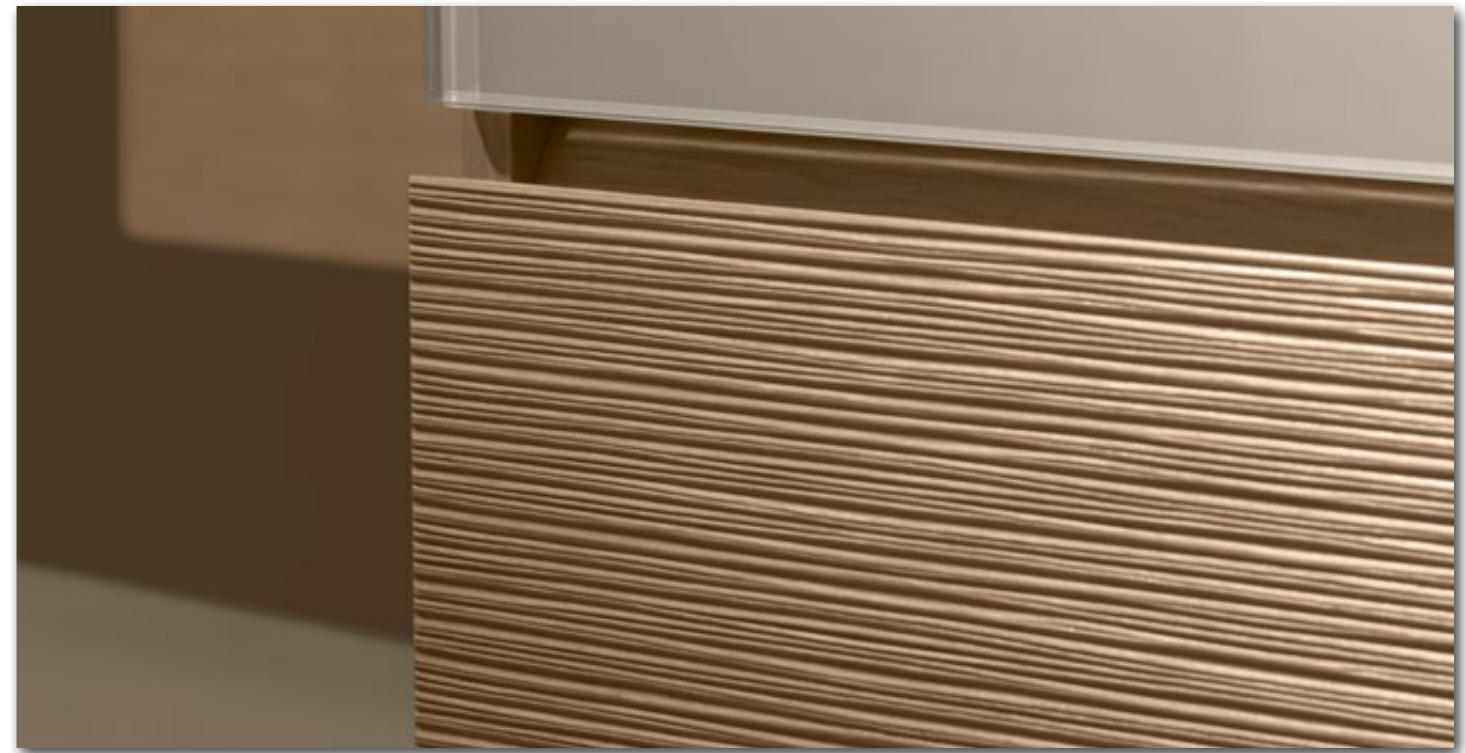
Coreboard MDF

Thickness 4,5 mm / 18,5 mm

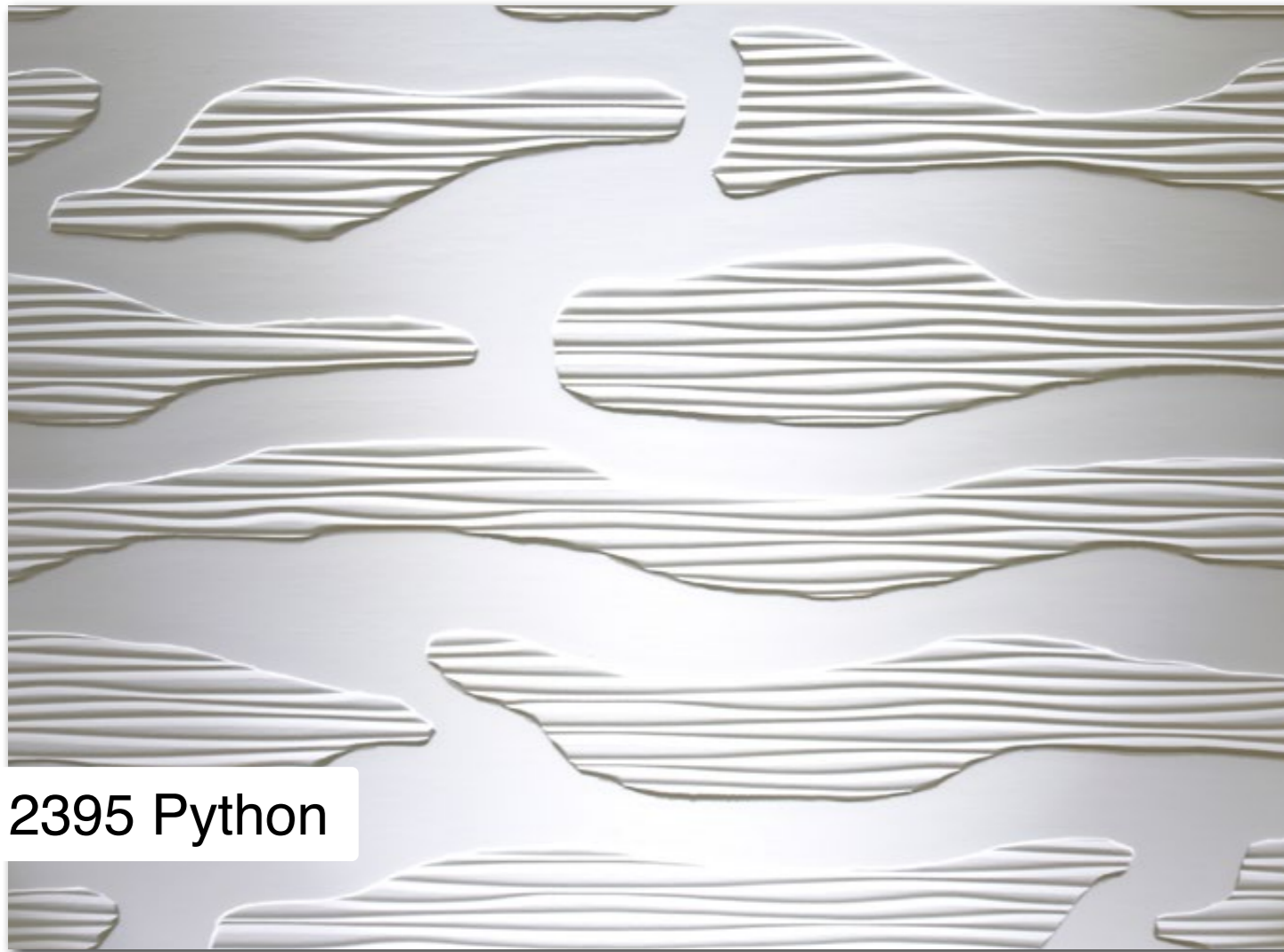
Repetition No repetition

Finish Raw, unlacquered

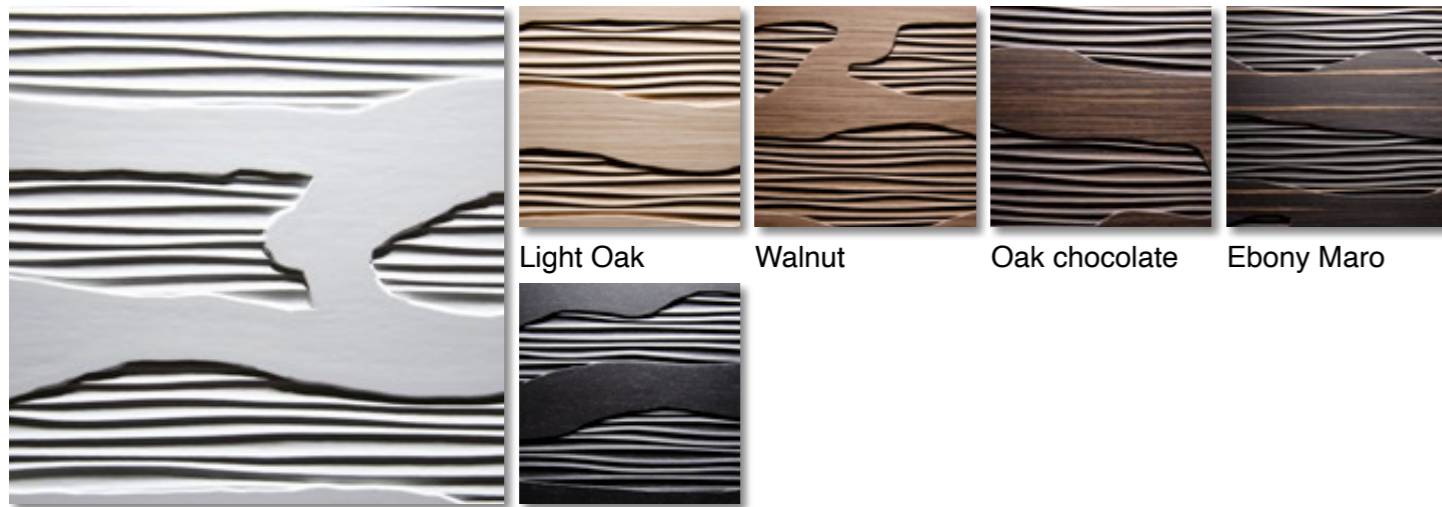
Embossment One-sided







2395 Python



Lacquerable foil

Black

Light Oak

Walnut

Oak chocolate

Ebony Maro

Python is inspired by the eye-catching skin of the royal python. The structure combines smooth areas with embossed zones in 2201 Wave texture.

Board size 1050 x 2450 mm

Thickness 4,5 mm / 18,5 mm

Finish Raw, unlacquered

Coreboard MDF

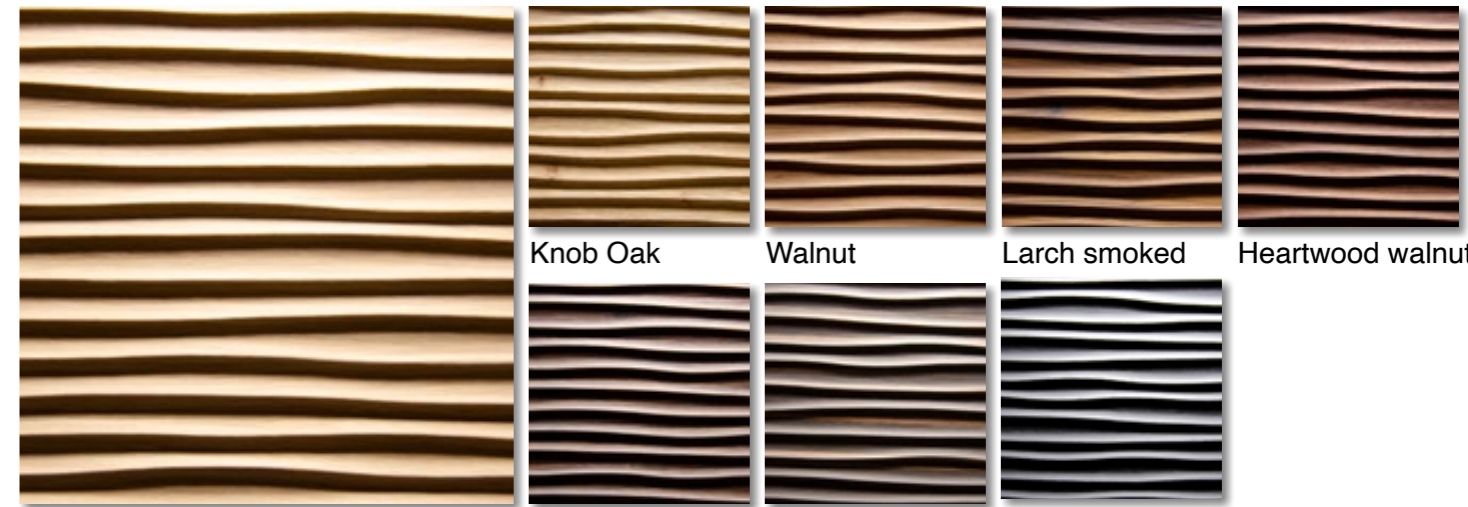
Repetition 1050 x 2450 mm

Embossment One-sided



Design: C13 Architecture d'intérieur
Photo: Julien Carosi

2306 Dune



Light Oak

Knob Oak

Walnut

Larch smoked

Heartwood walnut

Oak chocolate

Ebony Maro

Light Oak

Dune is inspired by the uniform marks which are left by the wind on sand dunes. The waves are slightly curved with valleys around 10 - 15 mm width between the ridges.

Board size 2450 x 1050 / 1050 x 2450 mm
3135 x 1270 mm

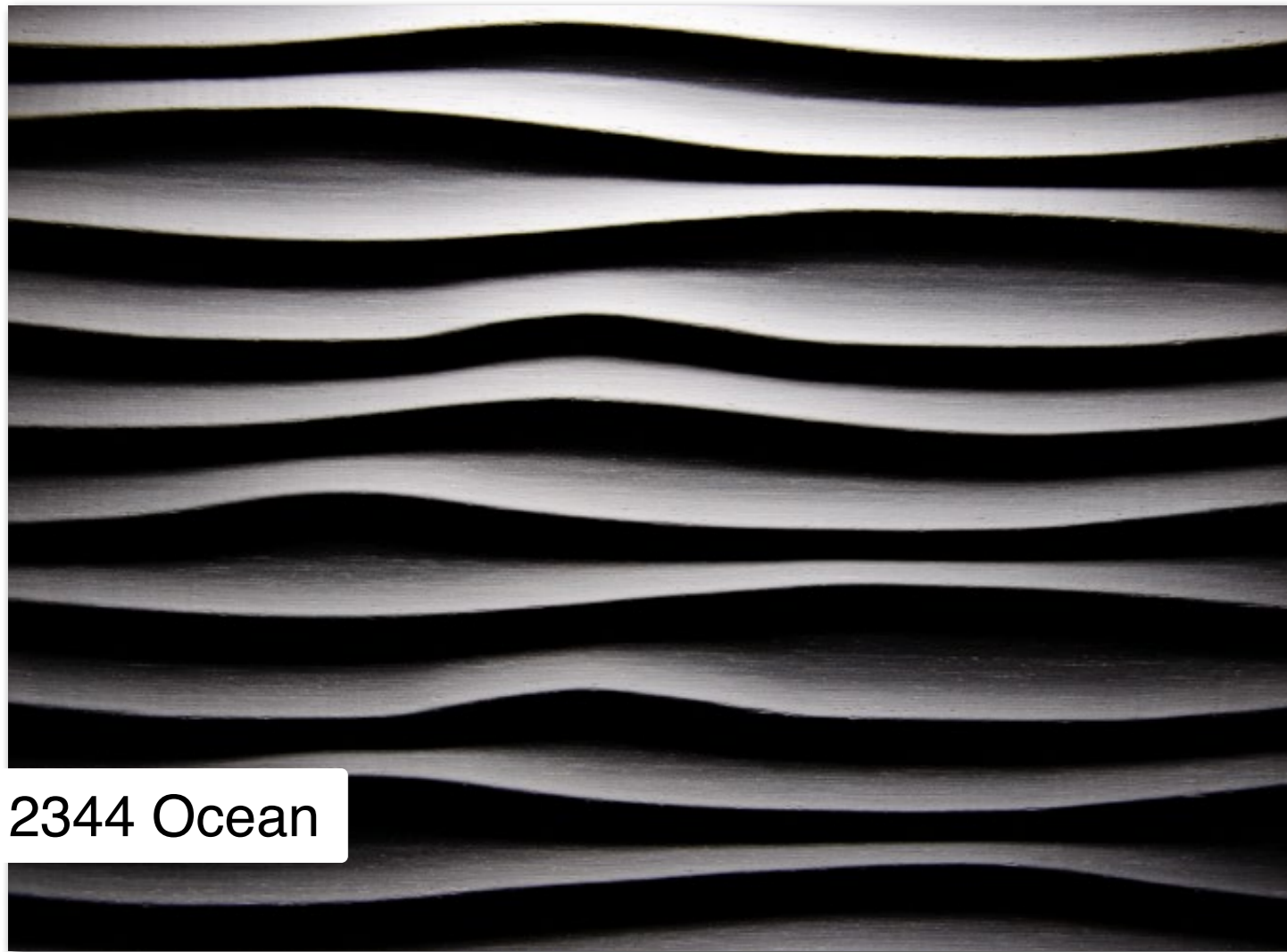
Thickness 6 mm / 18,5 mm

Finish Raw, unlacquered

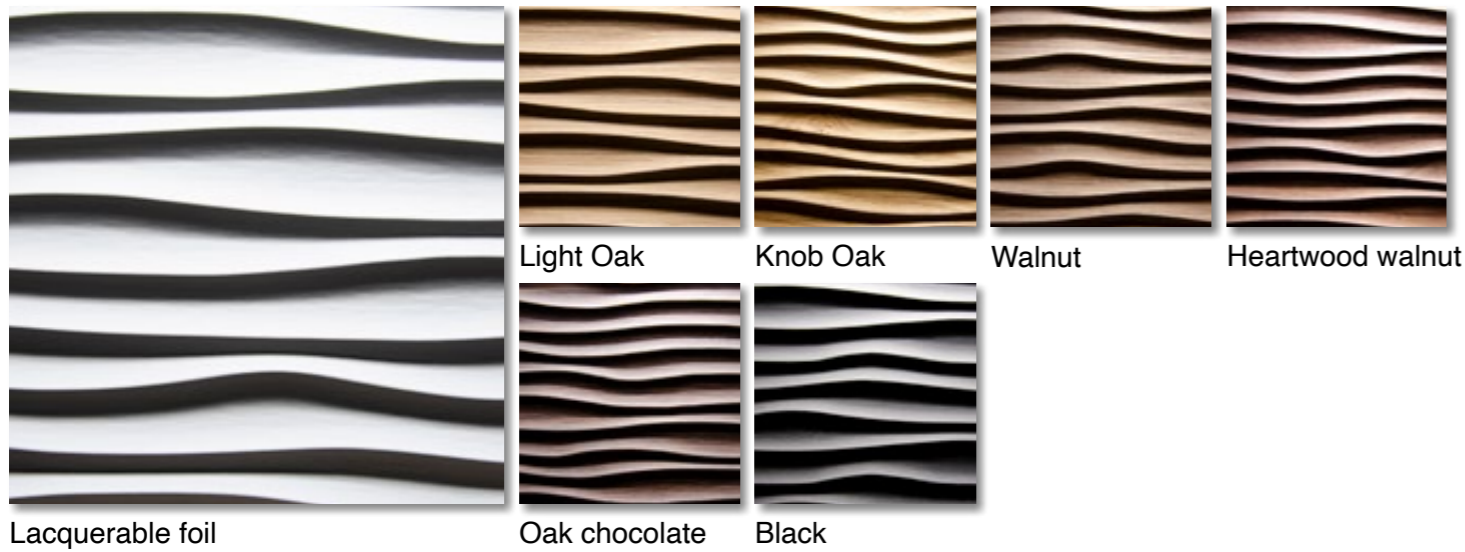
Coreboard MDF

Repetition No repetition

Embossment One-sided



2344 Ocean



Ocean is inspired by the big and rough wave movements of the ocean. The extra deep and wide structure has depressions of up to 25 mm width.

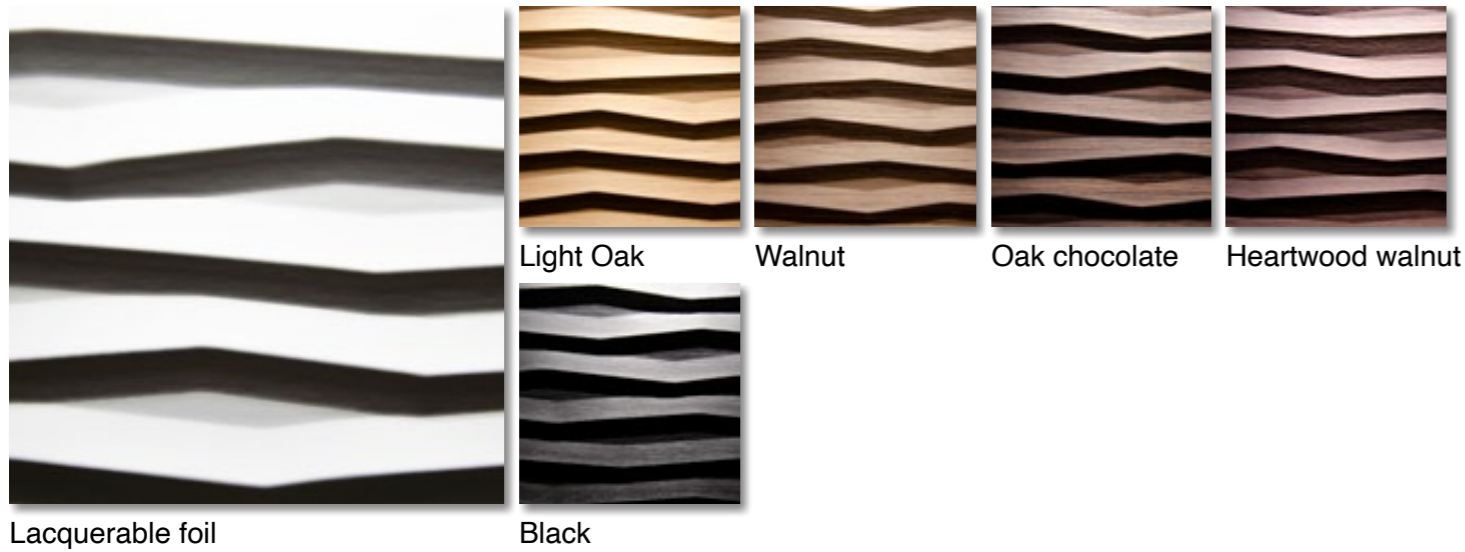
Board size	2450 x 1050 / 1050 x 2450 mm 3135 x 1270 / 1270 x 3135 mm	Coreboard	MDF
Thickness	9 mm / 21 mm	Repetition	3125 x 1250 mm (625 x 625) 1250 x 3125 mm (625 x 625)
Finish	Raw, unlacquered	Embossment	One-sided







2369 Flame



Flame represents the natural movement and geometry of a flame. The uneven arrangement creates an interesting play of light and shadow.

Board size 2450 x 1050 / 1050 x 2450 mm
3135 x 1270 / 1270 x 3135 mm

Thickness 9 mm / 21 mm

Finish Raw, unlacquered

Coreboard MDF

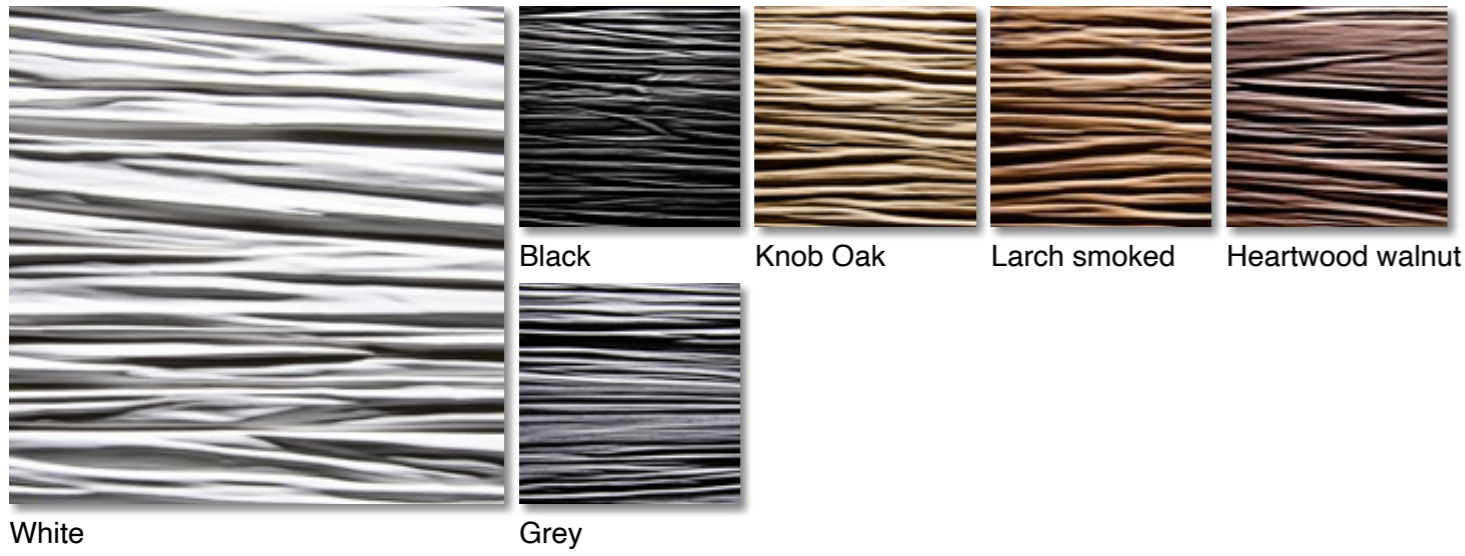
Repetition 3125 x 1250 mm (625 x 625)
1250 x 3125 mm (625 x 625)

Embossment One-sided





2451 Split



Split is inspired by the structure of splintered wood. The deep structure appears authentic and real.

Board size 3135 x 1270 / 1270 x 3135 mm
Thickness 21 mm
Finish Raw, unlacquered

Coreboard Plywood
Repetition No repetition
Embossment One-sided

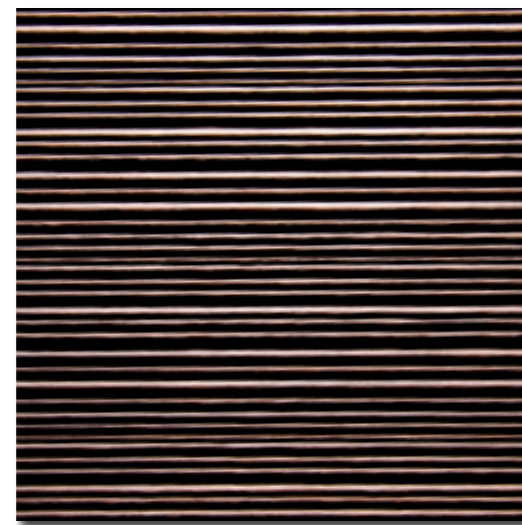




2432 Groove



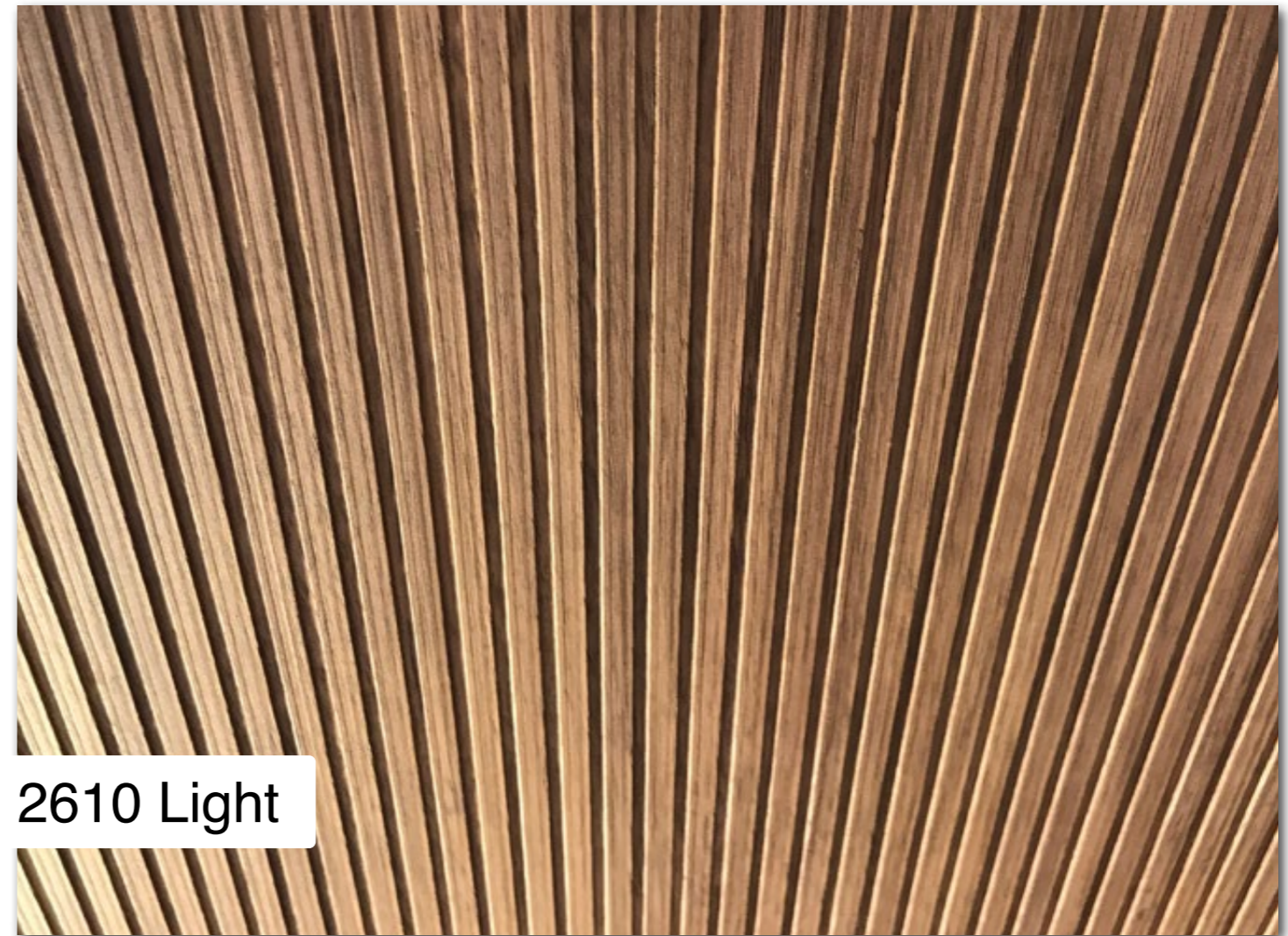
Knob Oak



Heartwood walnut

Groove is an elegant and classic corrugated profile. The distance from ridge to ridge varies approximately between 3 - 5 mm.

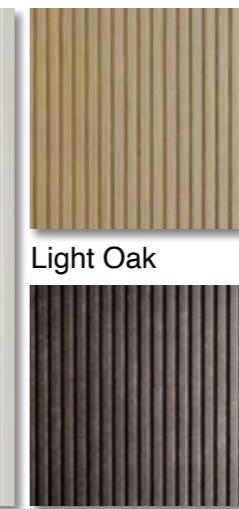
Board size	2450 x 1050 / 1050 x 2450 mm 1270 x 3135 mm	Coreboard	Particle board
Thickness	18,5 mm	Repetition	No repetition
Finish	Raw, unlacquered	Embossment	One-sided



2610 Light



White



Black



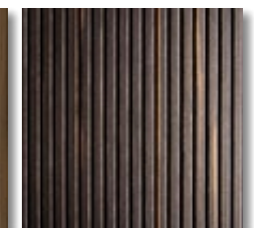
Light Oak



Knob Oak



Heartwood walnut

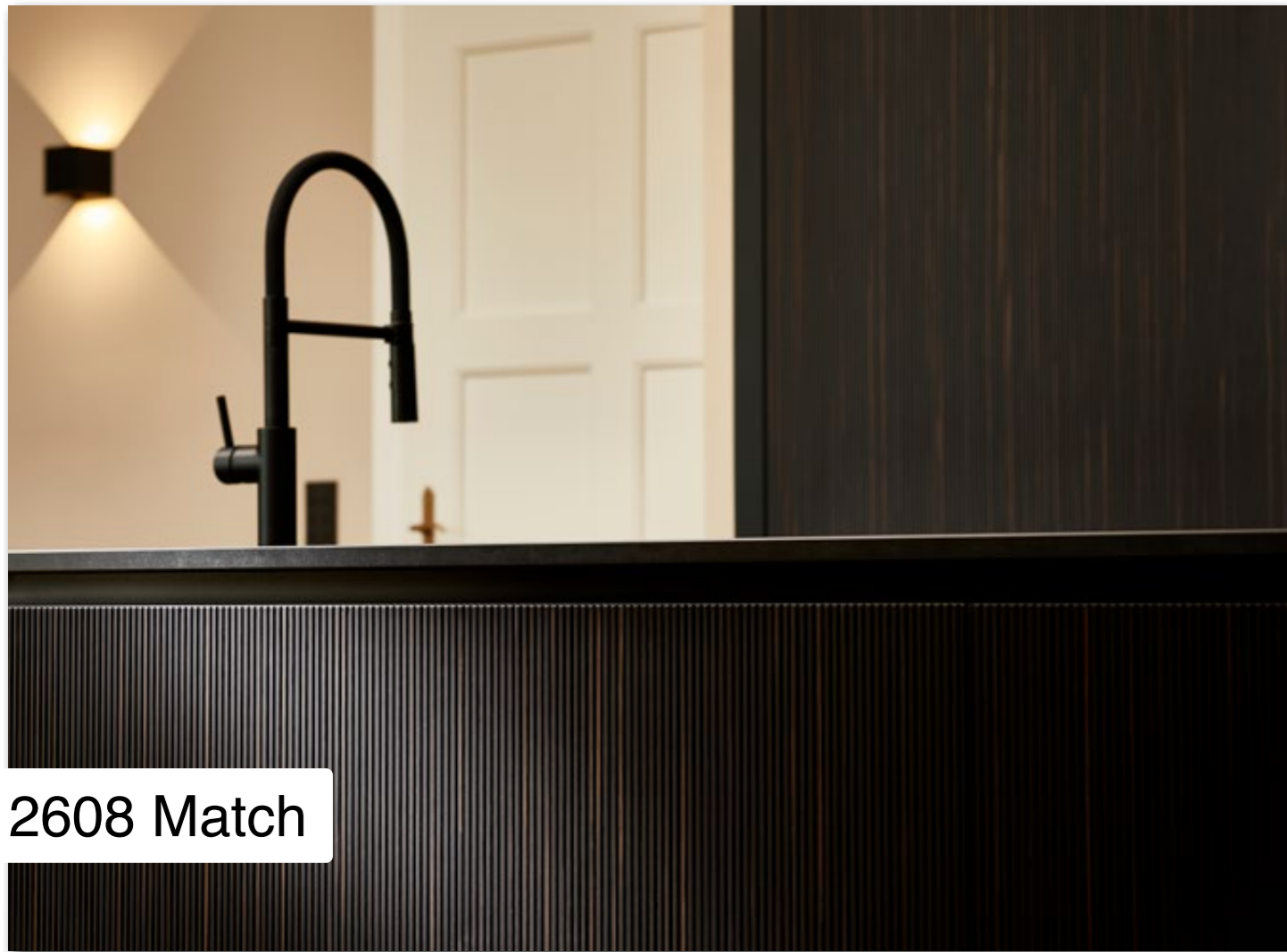


Maro Ebony



Light is a straight, bar-shaped looking structure. The embossing has gap of 2,5 mm and a width of 5 mm. The depth of this embossment is 1,0 mm.

Board size	3135 x 1270 mm	Coreboard	Particle board
Thickness	18,5 mm	Repetition	No repetition
Finish	Raw, unlacquered	Embossment	One-sided



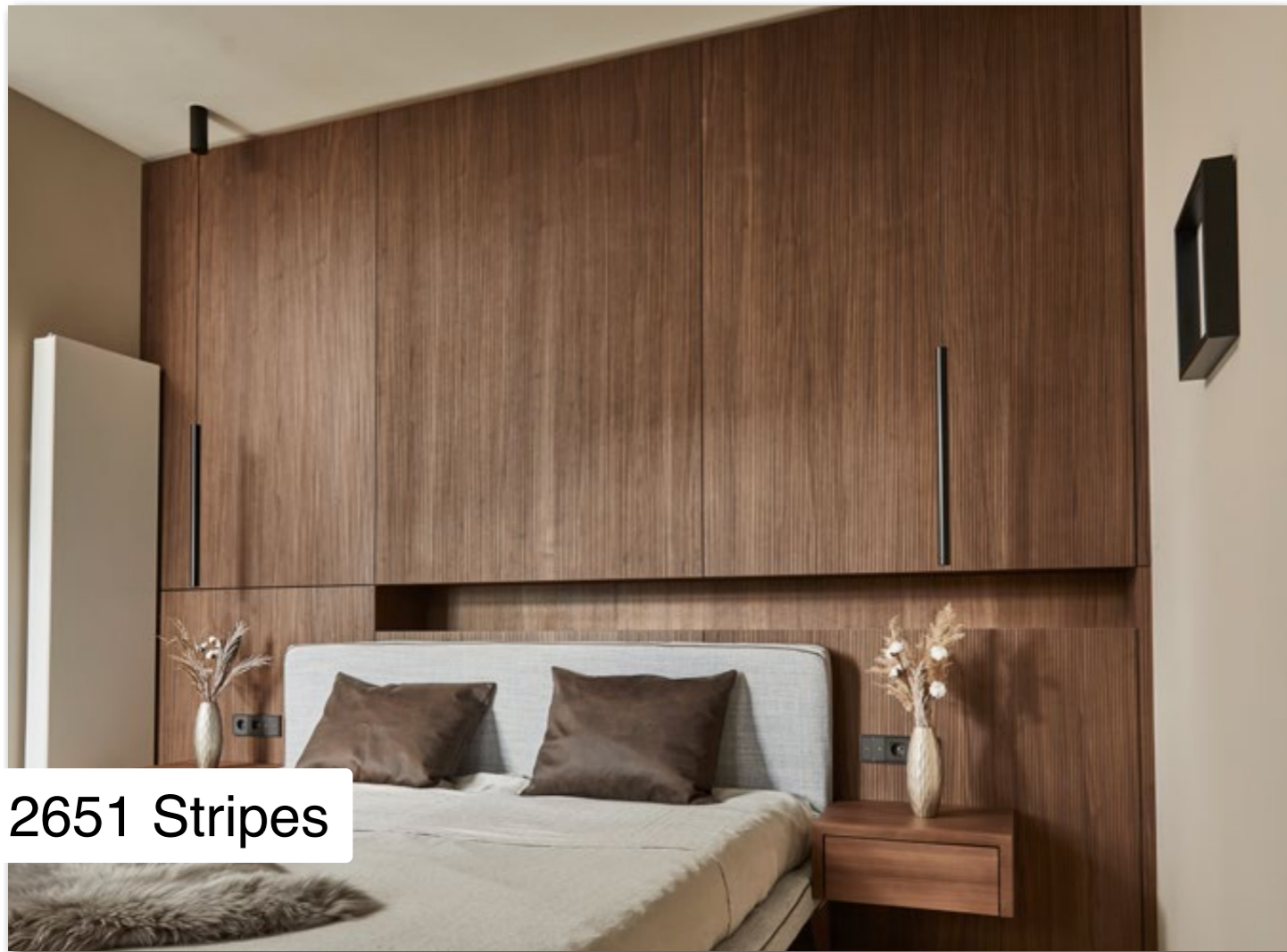
2608 Match



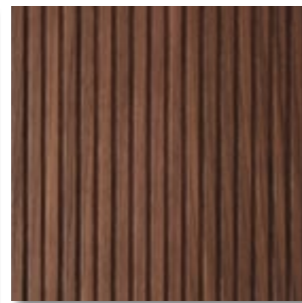
Match is a straight, bar-shaped looking structure. The embossing has gap of 2.5 mm and a width of 5 mm. The depth of this embossment is 1,5 mm.

Board size	3135 x 1270 mm	Coreboard	Particle board
Thickness	18,5 mm	Repetition	No repetition
Finish	Raw, unlacquered	Embossment	One-sided

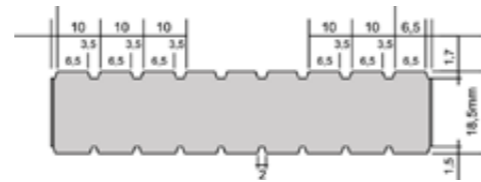




2651 Stripes



Heartwood walnut



Knob Oak

Stripes is a straight, bar-shaped looking structure. The embossing has gap of 3,5 mm and a width of 6,5 mm. The depth of this embossment is 1,7 mm.

Board size 2450 x 1050 / 3135 x 1270 mm

Thickness 18,5 mm

Finish Raw, unlacquered

Coreboard Particle Board

Repetition No repetition

Embossment Two-sided



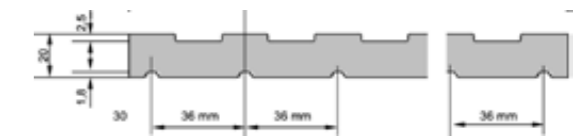
2643 Straight



Heartwood walnut



Black



Knob oak

Straight is a linear structure with parallel running struts with a gap of 18mm. The structure has a gap of 18 mm and width of 18 mm.

Board size 3135 x 1270 mm

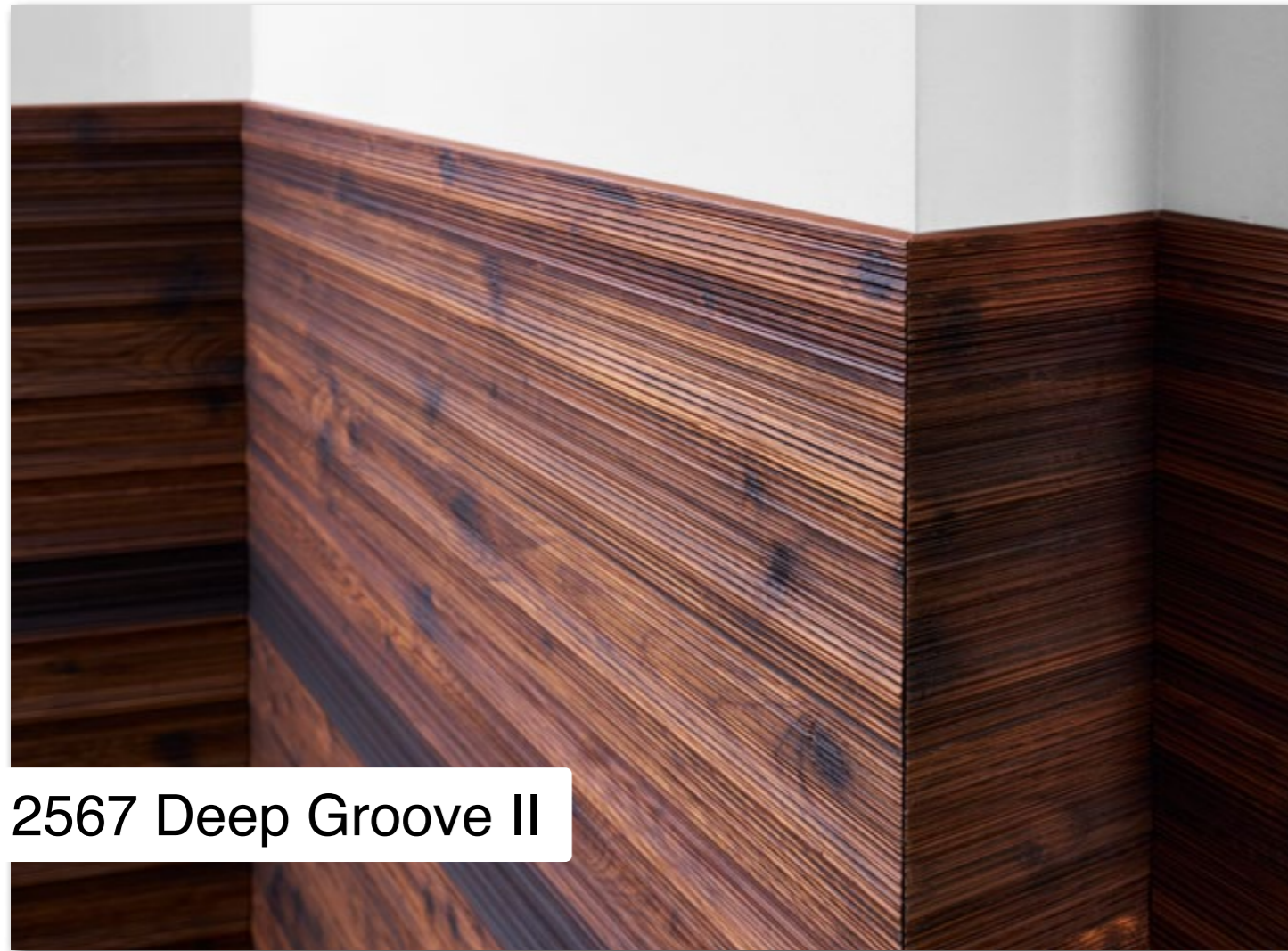
Thickness 20 mm

Finish Raw, unlacquered

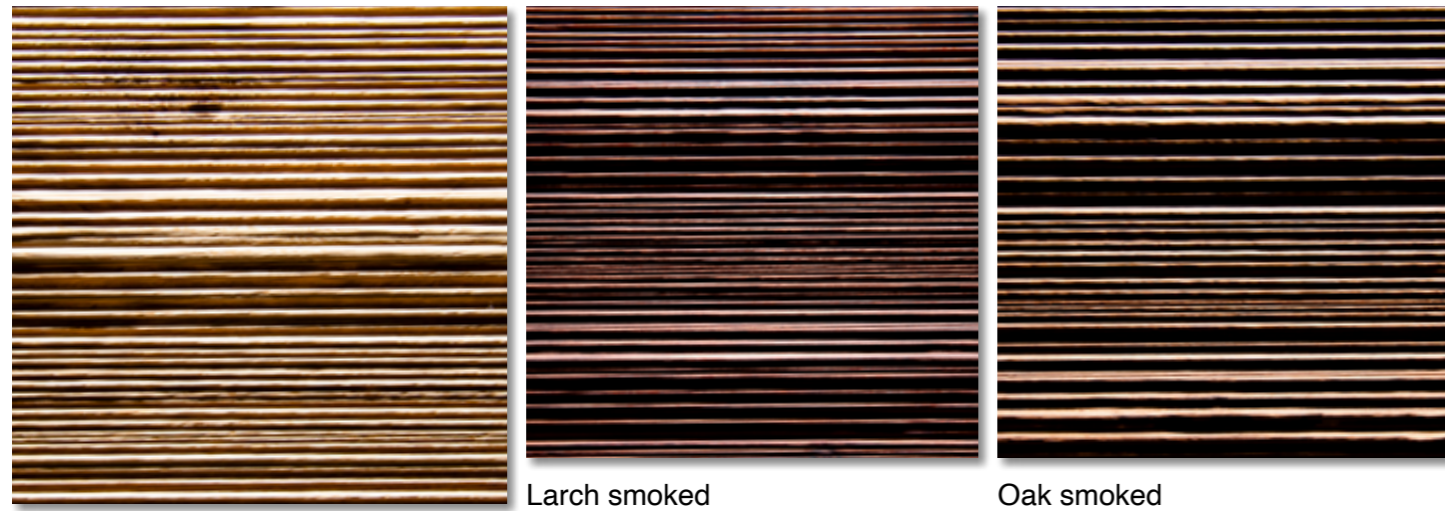
Coreboard Particle board

Repetition No repetition

Embossment Two-sided



2567 Deep Groove II



Oak rustic

Larch smoked

Oak smoked

Deep Groove II is an elegant and classic corrugated profile. Additionally, the structure is slightly waved when looking at the profile.

Board size 3135 x 1270 / 1270 x 3135 mm

Thickness 22,5 mm

Finish Raw, unlacquered

Coreboard Plywood

Repetition No repetition

Embossment One-sided

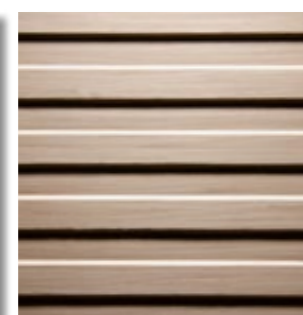




2552 Trapez



White



Light Oak



Maro Ebony



Bog Oak

Trapez is a straight-lined and flat structure with trapeze-shaped lamella, which have a width of approximately 15 mm.

Board size 2450 x 1050 / 1050 x 2450 mm
3135 x 1270 / 1270 x 3135 mm

Thickness 18,5 mm

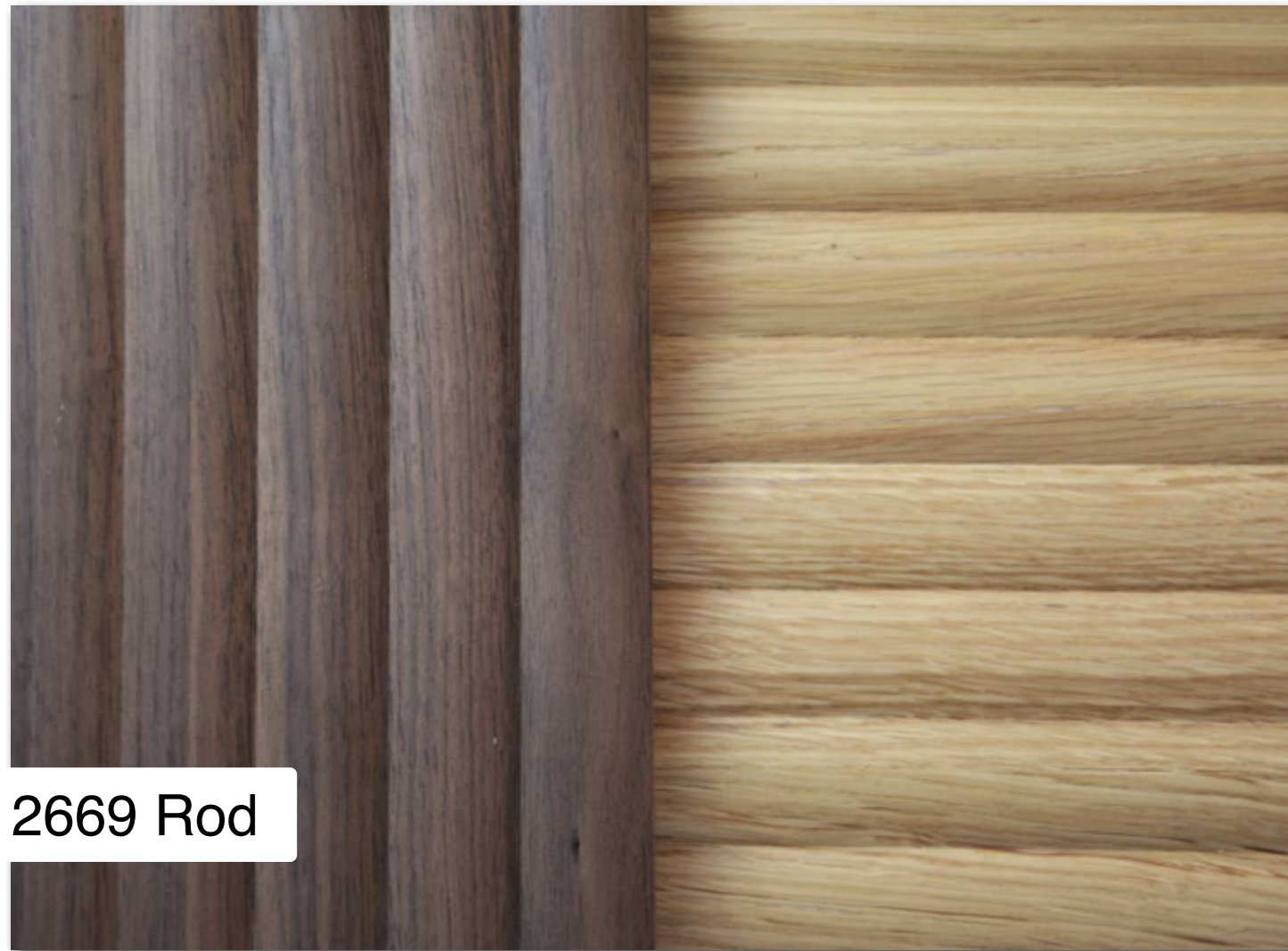
Finish Raw, unlacquered

Coreboard Plywood

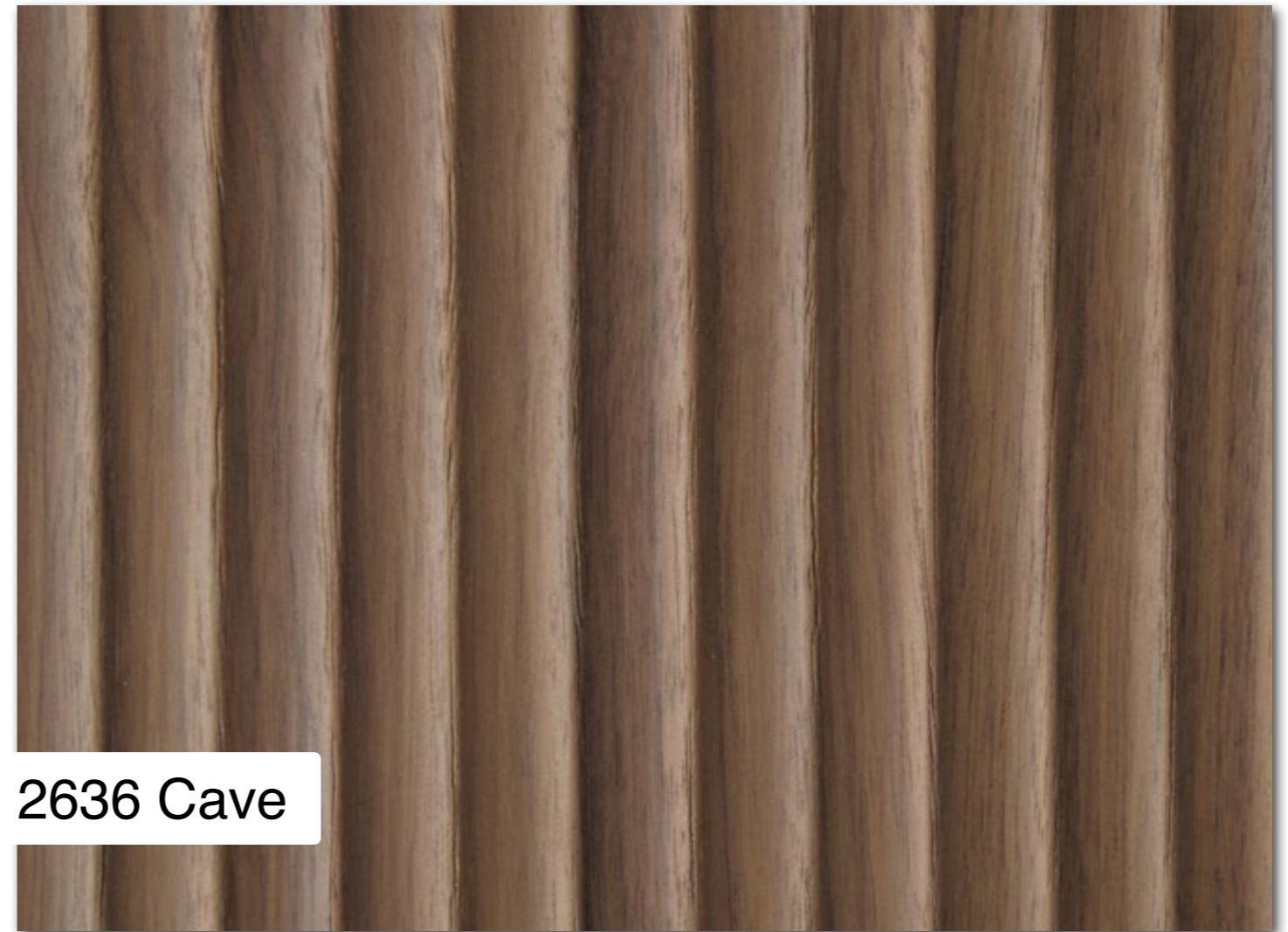
Repetition No repetition

Embossment One-sided





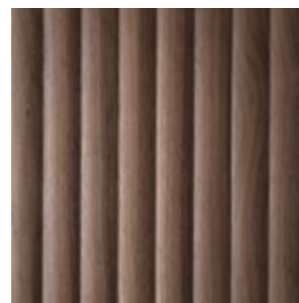
2669 Rod



2636 Cave



Knob Oak



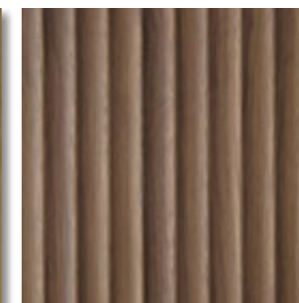
Heartwood walnut



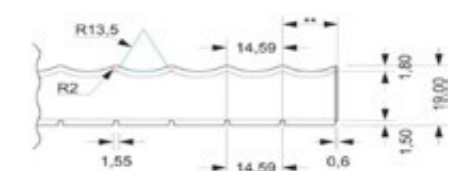
Lacquerable foil



Knob oak



Heartwood walnut



Rod is a straight, round bar-shaped looking structure. The embossing has a width of 25 mm. The depth of this embossment is 2,4 mm.

Board size 2450 x 1050 mm

Thickness 18,5 mm

Finish Raw, unlacquered

Coreboard Particle Board

Repetition No repetition

Embossment Two-sided

Cave is a straight, scooped out looking structure. The embossing has a width of 14,5 mm. The depth of this embossment is 1,7 mm.

Board size 2450 x 1050 mm

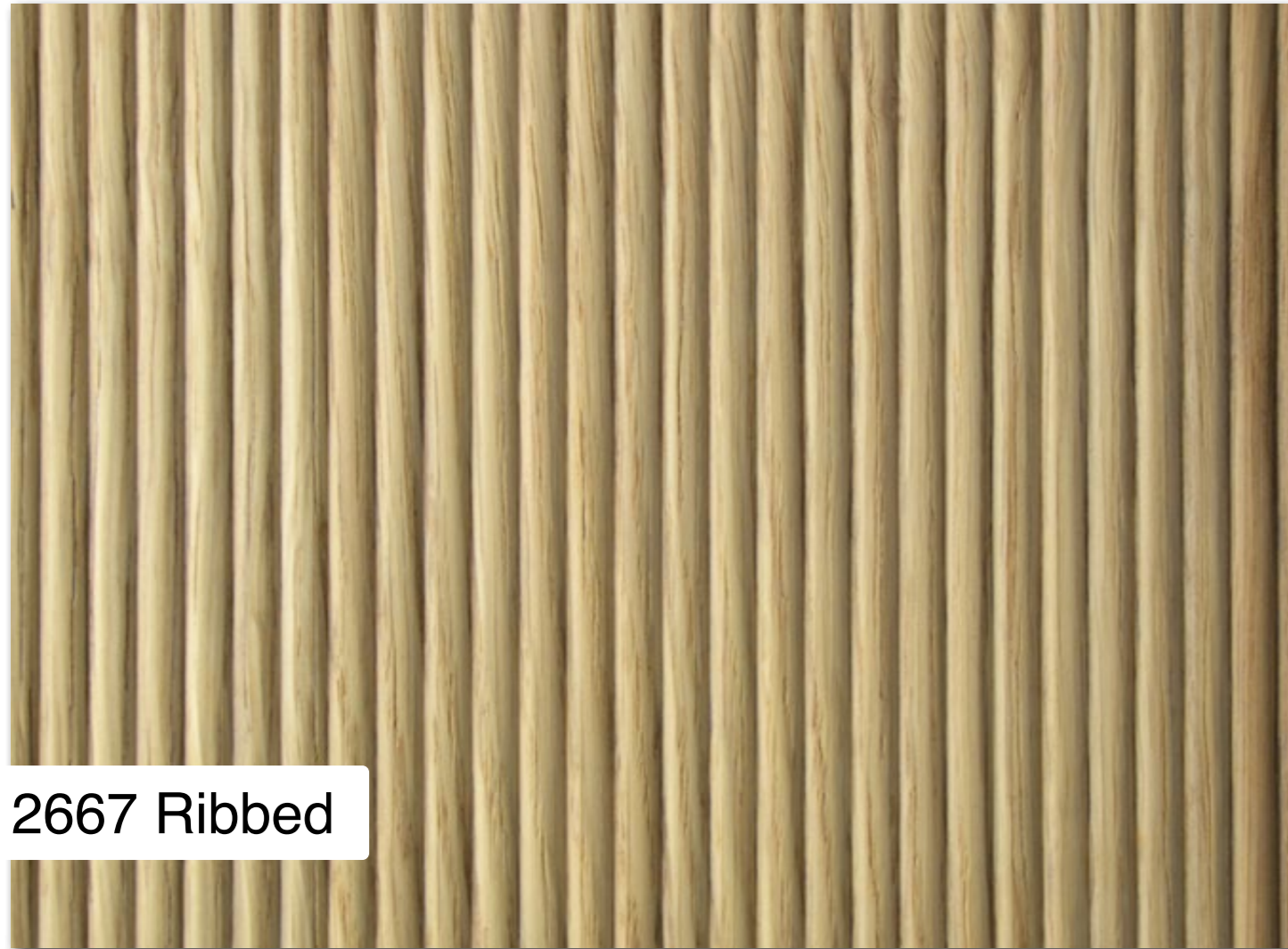
Thickness 18,5 mm

Finish Raw, unlacquered

Coreboard Particle board

Repetition No repetition

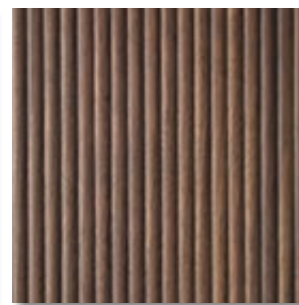
Embossment Two-sided



2667 Ribbed



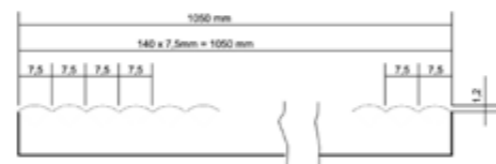
Knob Oak



Heartwood walnut



Lacquerable foil



Ribbed is a straight, round bar-shaped looking structure. The embossing has a width of 7,5 mm. The depth of this embossment is 1,2 mm.

Board size 2450 x 1050 mm

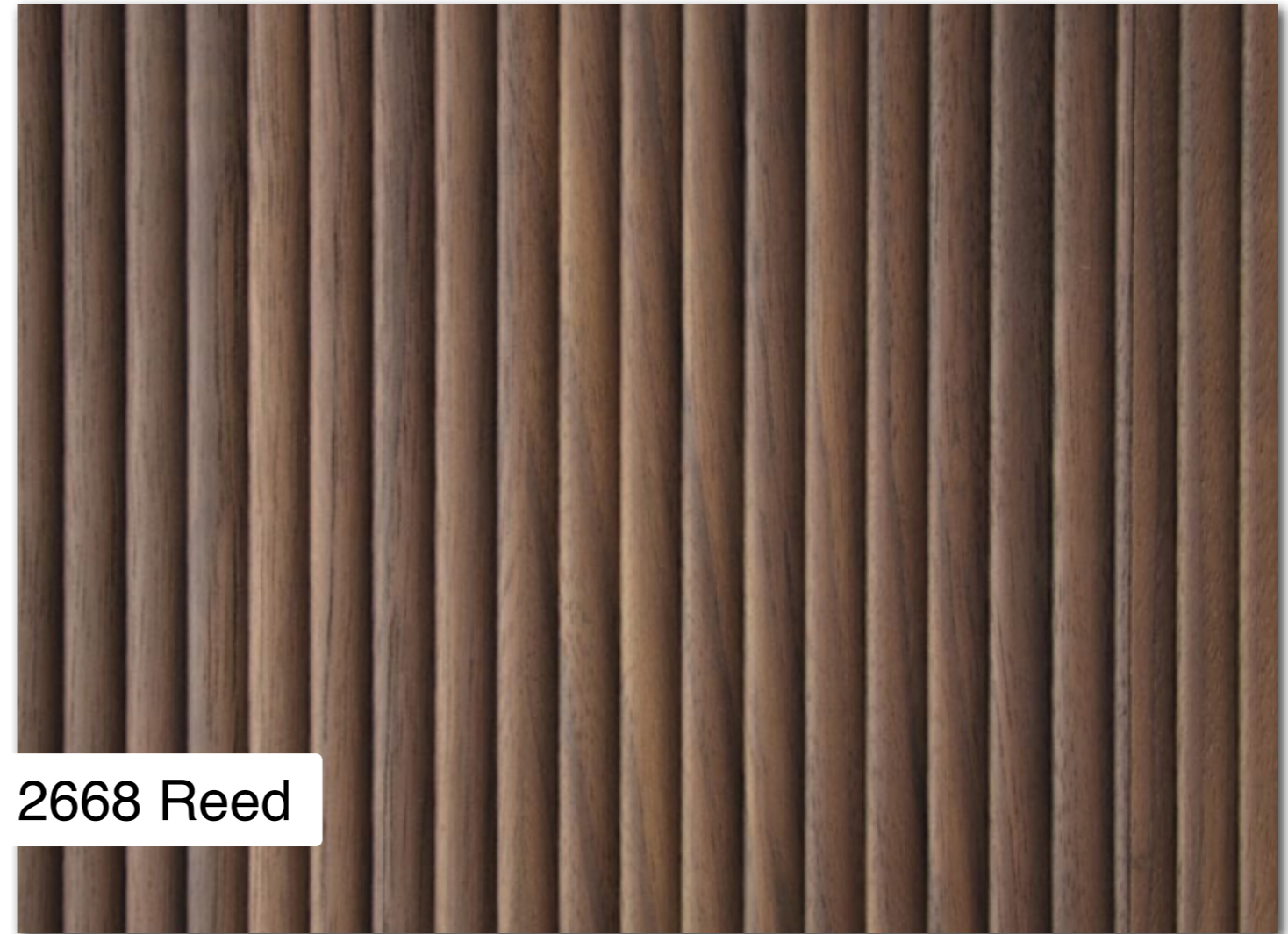
Thickness 18,5 mm

Finish Raw, unlacquered

Coreboard Particle Board

Repetition No repetition

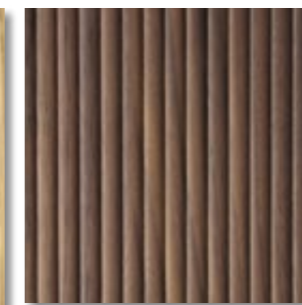
Embossment One-sided



2668 Reed



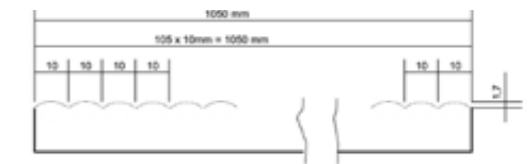
Knob oak



Heartwood walnut



Lacquerable foil



Reed is a straight, round bar-shaped looking structure. The embossing has a width of 10 mm. The depth of the structure is 1,7 mm.

Board size 3135 x 1270 mm

Thickness 18,5 mm

Finish Raw, unlacquered

Coreboard Particle board

Repetition No repetition

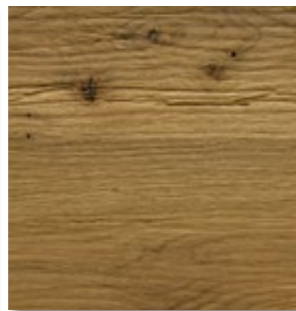
Embossment One-sided



Tabletop Old Nature



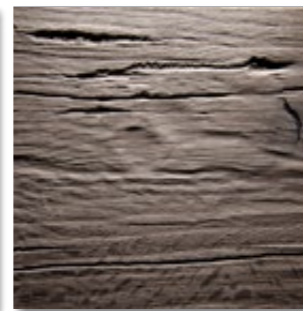
Oak nature



Old oak



Oak smoked



Oak grey

The tabletop Old Nature is a combination of two textured panels. 2512 Old Nature is used for the top and 2487 Borke is used as an embossed live-edge. Available as finished pieces.

Board size Max. 3135 x 1270 mm

Coreboard Particle Board

Thickness 38 mm

Finish Clear matt lacquered

Edge crosswise Flat veneer
End grain

Edge lengthwise 2487 Borke Live-Edge
90° straight
35° straight
35° waved





Tabletop Burned Wood



Black matt lacquered



Ash effect lacquered

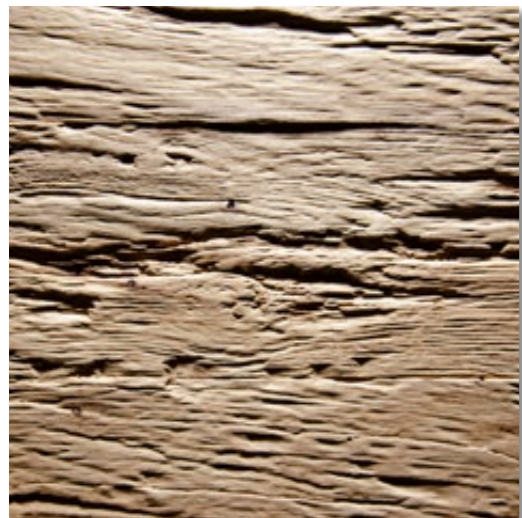
The tabletop Burned Wood is a combination of two textured panels. 2588 Burned Wood is used for the top and 2584 Smooth Bark is used as an embossed live-edge. Available as finished pieces.

Board size	Max. 3135 x 1270 mm	Edge crosswise	Flat veneer
Coreboard	Particle Board	Edge lengthwise	Smooth Bark Live-Edge
Thickness	38 mm		90° straight
Finish	Lacquered		35° straight
			35° waved





Tabletop Chopped Wood



Old oak



Larch smoked

The **tabletop Chopped Wood** is embossed like old wood and is used for the top and for the edges as well.

Board size Max. 3135 x 1270 mm

Coreboard Particle Board

Thickness 38 mm

Finish Lacquered

Edge crosswise Flat veneer

Edge lengthwise Chopped Wood
90° straight
35° straight



Handling Instructions

Storage

- Boards must be stored on a pallet completely flat at anytime
- Protect the entire boards with a cover board from the top
- Always store ample vented, dry and moisture/frost free
- Boards with veneer surface must be sun-protected
- Do not store/transport boards standing
- Put a foam film or corrugated paper between the boards to avoid pressure marks

Processing & Screwing

- Assure adequate conditioning / time to settle before processing the boards
- During processing boards need to seat solidly with at least 50% of the direct mechanical irradiated area
- We recommend primary drilling before using screws to avoid splitting
- For boards with a repeating pattern, please consider saw notches on the frontside of the board
- Thin boards up to 4,5mm thickness can be bend to a radius of 600 mm or more

Sawing

- Use sharp hard metall sawing blades
- Work with a low sawing feed rate
- Do not set the saw blade too high
- Scoring is nonessential

Milling & Drilling

- Use hard metall tools for milling and profile cutting
- All standard drilling tools for woodworking can be used

Edges & Lacquering

- Please follow our detailed instructions in the brochure “Edge and Surface”
- Always lacquer raw panels and lacquer both sides equally
- Panels with a particle board or MDF core always need to be edge-banded
- Missing edge-band can lead to cracks in the material
- We recommend solvent-based 2K PUR lacquer
- Never use regular wall paint on the boards
- All utilized veneers cannot be stained or oiled

Glueing & Bonding

- Standard wood glues and adhesives can be used
- We recommend formaldehyde-free glues
- Always assure that our material has the correspondent counterdraw if glued onto another structure
- Never stick boards directly on the walls. Use appropriate mounting fittings

Packaging

- Holohedral lying on a palette
- Put a foam film between the boards for protection
- For transportation boards must be evenly strapped on palette

Recycling

- Thermal/Energy recovery of the boards is uncomplicated (no PVC)

Edge Processing



Using conventional edge banding machines, leave sufficient excess to allow further refinement.



Refinish the excess length with a profile cutter.



Primarily use small tool profiles. A ball bearing guide ensures a smooth tool guidance.



Use an appropriate sanding block to help with sanding in the narrow surface structures (when necessary).

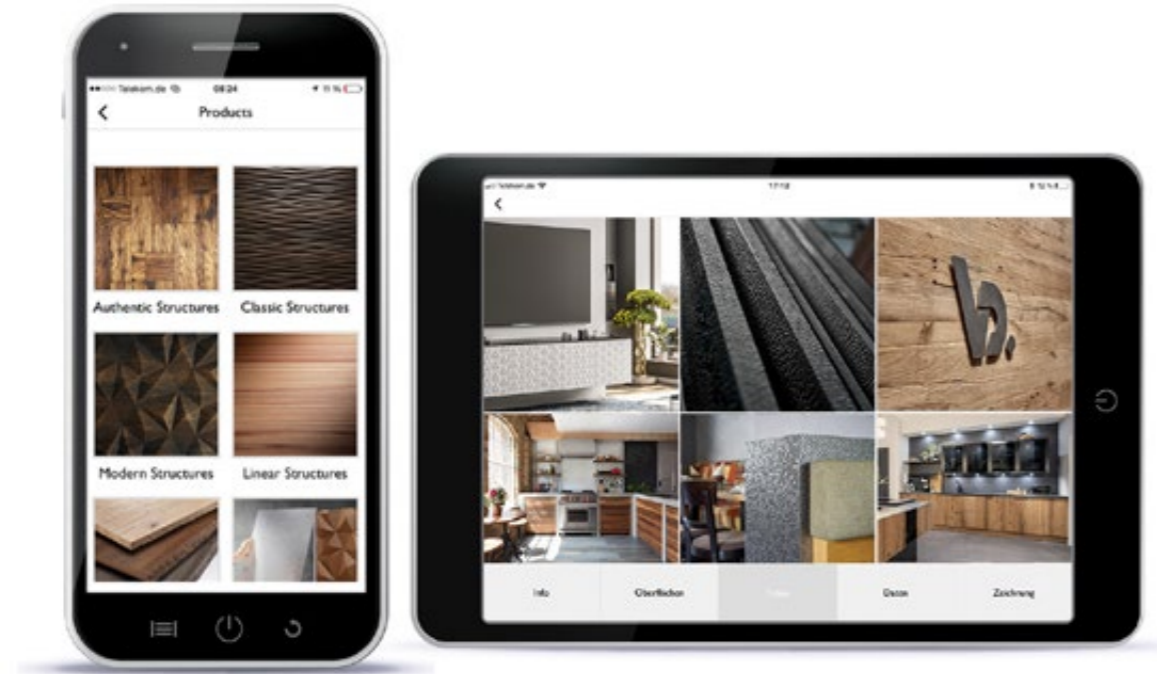


Sand/finish the edge subsequently parallel to structure path with a sanding pad (approx. grain 100).



Finally clean the surface structure with a fine copper wire brush (only for veneer surfaces).

Holz in Form App



Always at your fingertips!

The Holz in Form App is a handy tool, to provide useful information to our distribution partners, architects, interior designers, and everyone interested in our products. We will keep you updated about new products or upcoming trade fairs via push message.

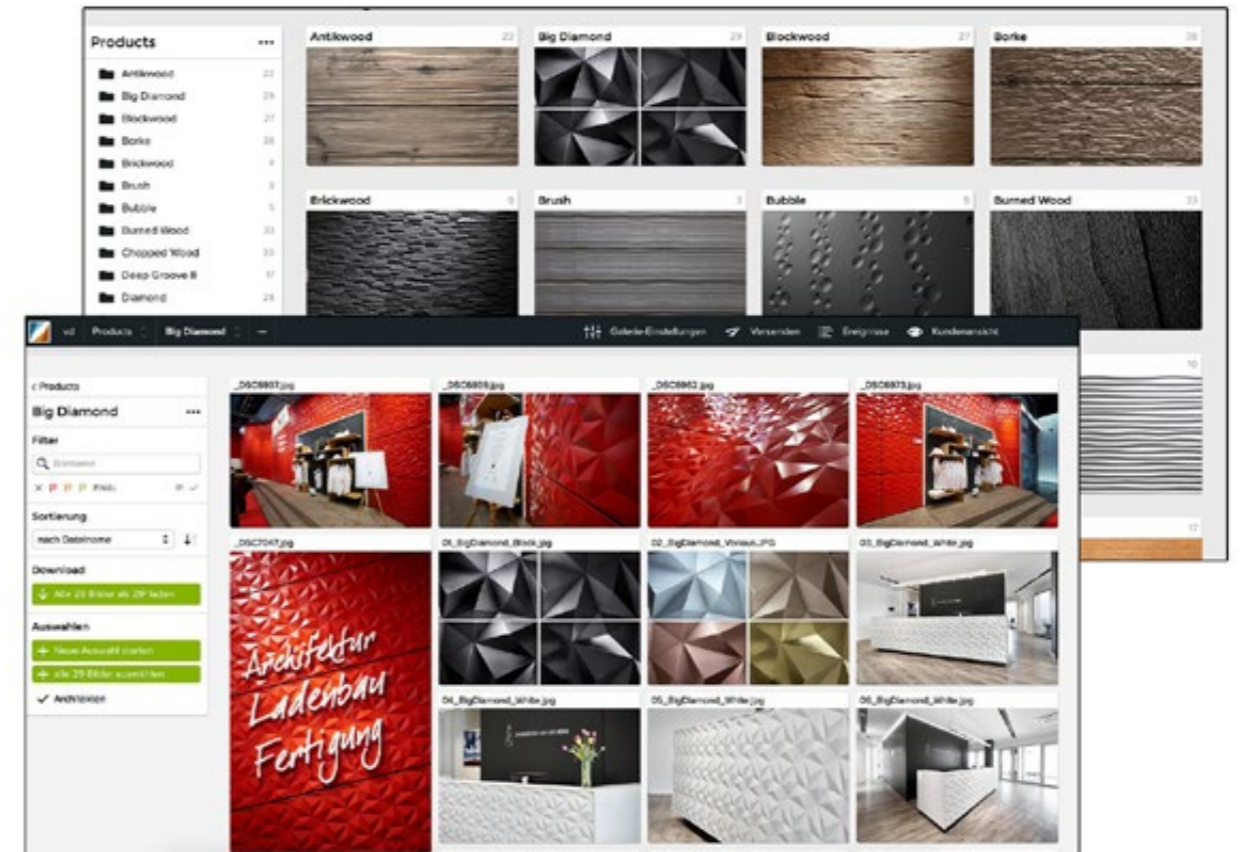
In our app you find:

- Product information
- Technical datasheets
- Technical drawings
- Application images
- Trade show dates

Just search in the appstore „Holz in Form“ or scan the QR-code to download our app on your mobile phone or tablet.



Photobox



Get inspired!

To show you our structures and surfaces in the best way possible, we created our Photobox, where you can browse and download high quality images as well as application examples.

- High resolution images
- Project pictures and inspirations
- Always updated

To access our Photobox please visit

www.vd-holzinform.de/en/media



HOLZ IN FORM



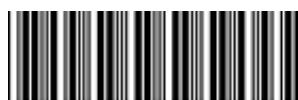
VD-Werkstätten GmbH & Co. KG

Am Hasselbruch 3
32107 Bad Salzuflen
Germany

0049 5208 957 77 0
info@vd-werkstaetten.de
www.vd-holzinform.de

Liability is excluded for all printing errors and omissions. Images are for illustration purposes only.
Colours may differ in print.

Printed: 26.09.2022
Last updated: 29.09.2022



900002